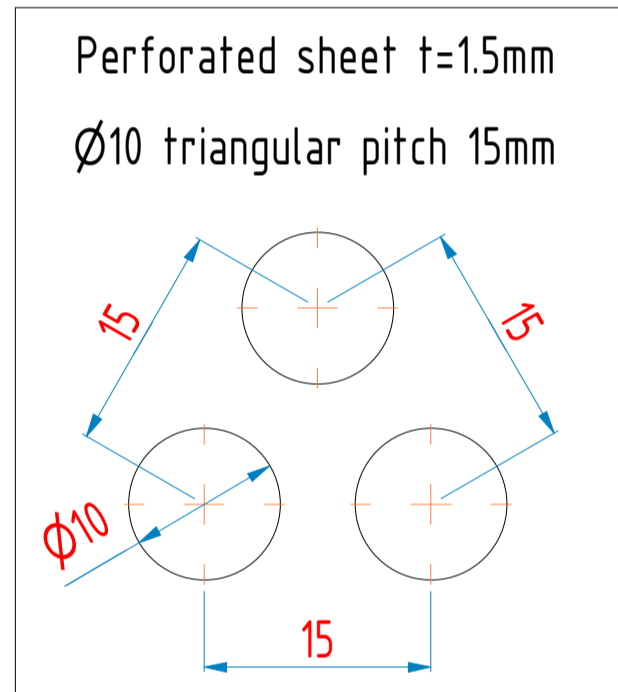
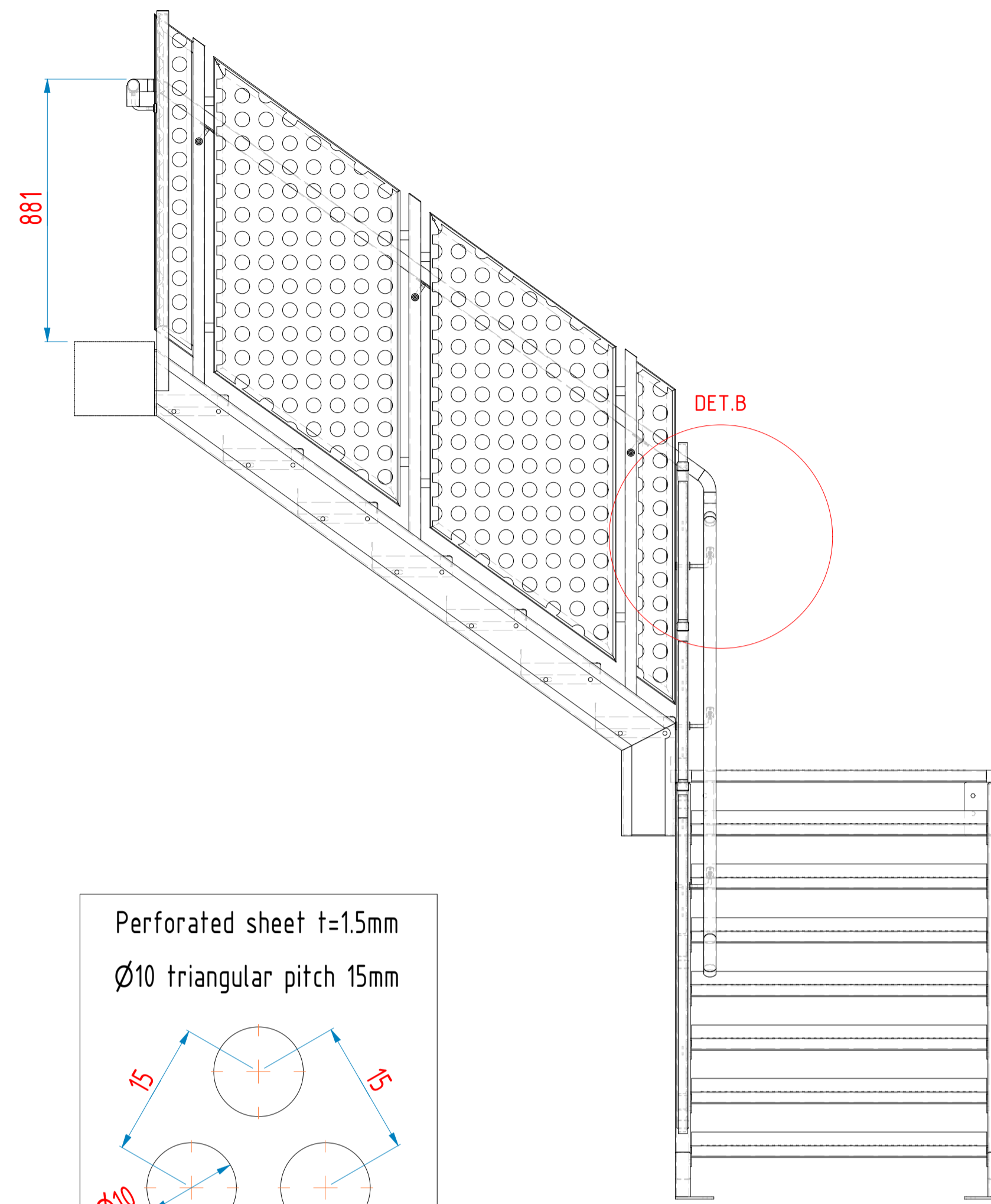
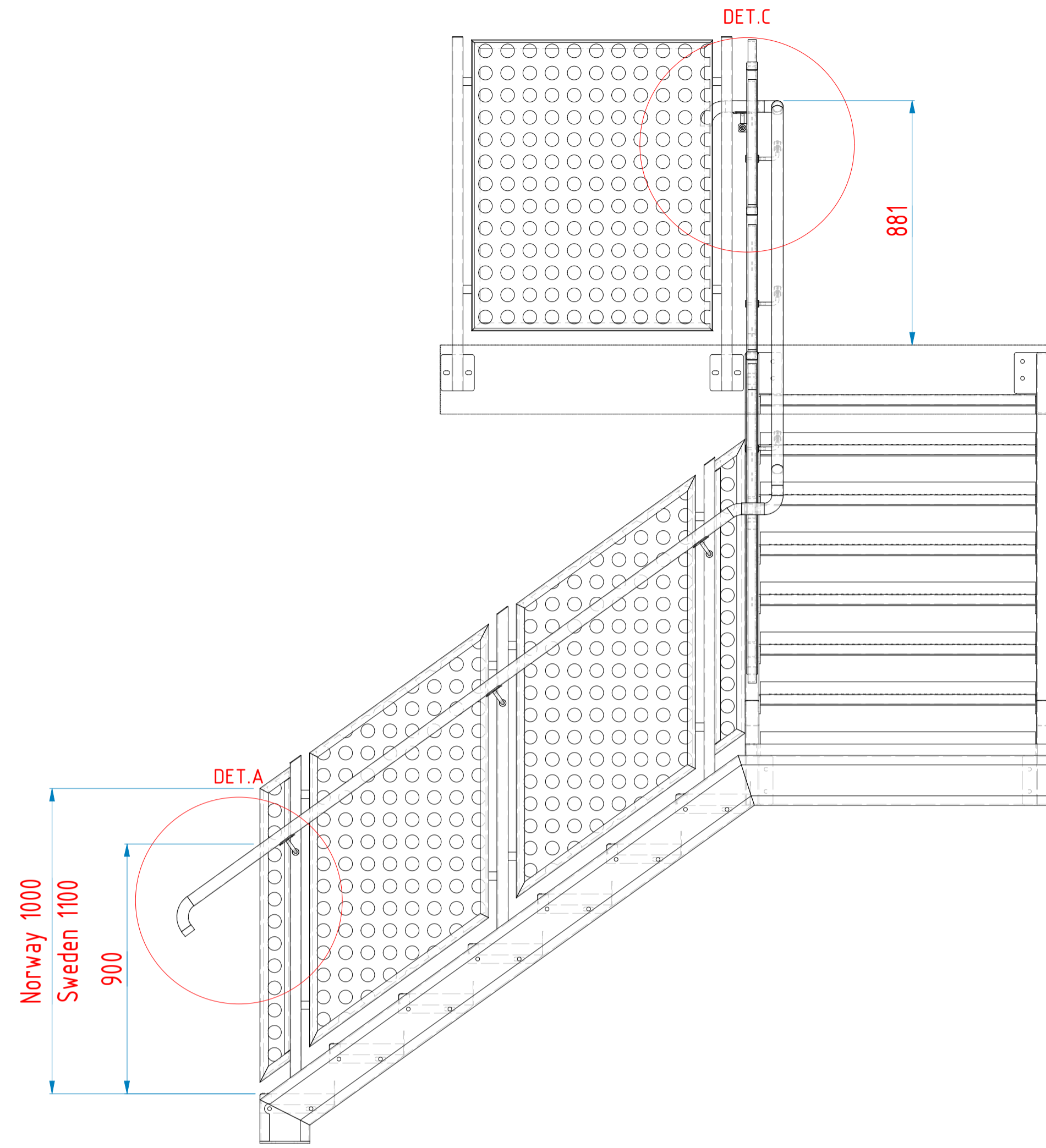


# Varia P stair-L single.idw



All sharp edges must be grinded

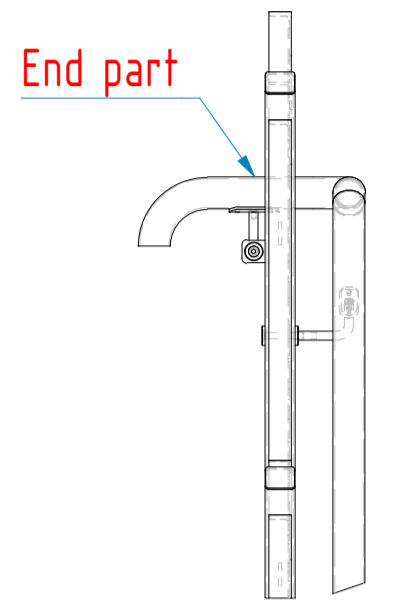
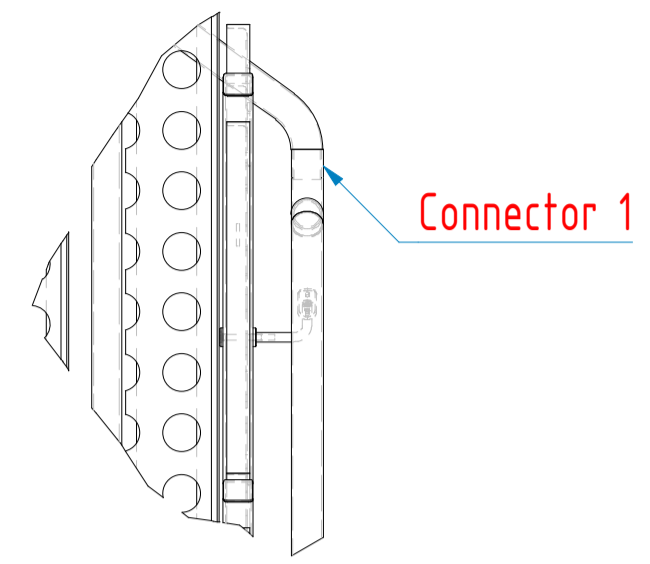
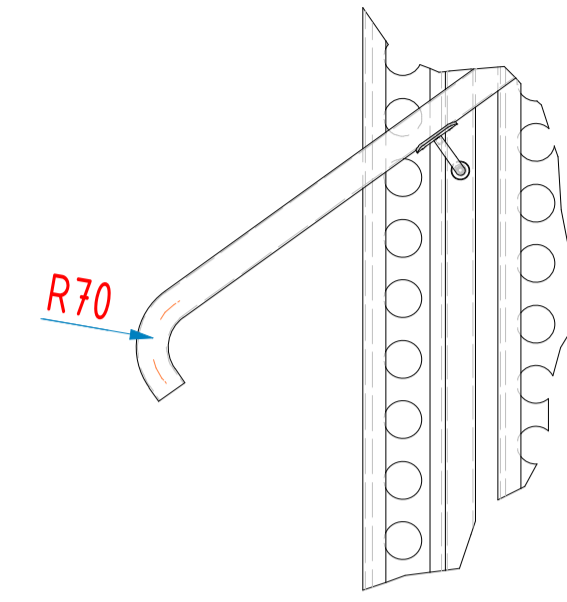
Standard perforation:

1. Round hole Ø10, square pitch 15mm
2. Round hole Ø10, triangular pitch 15mm

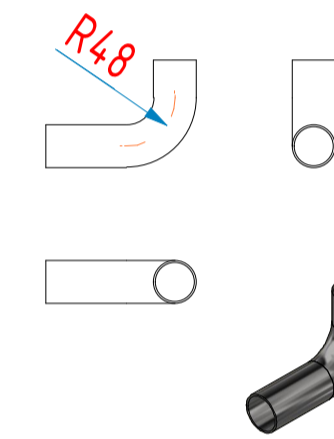
DET.A

DET.B

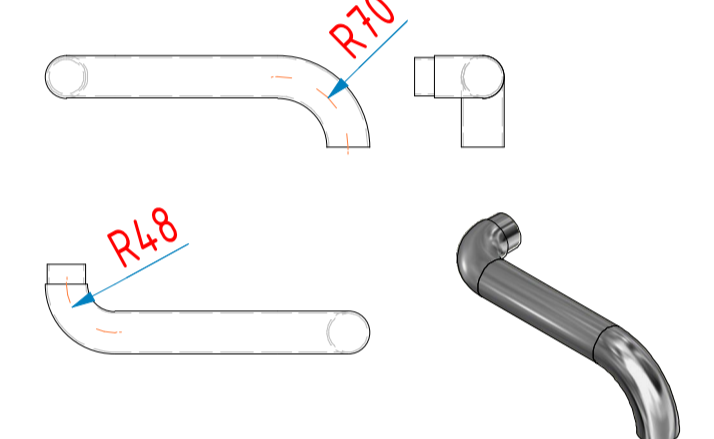
DET.C



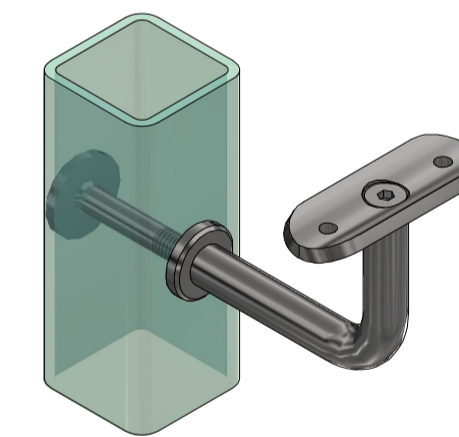
Connector 1



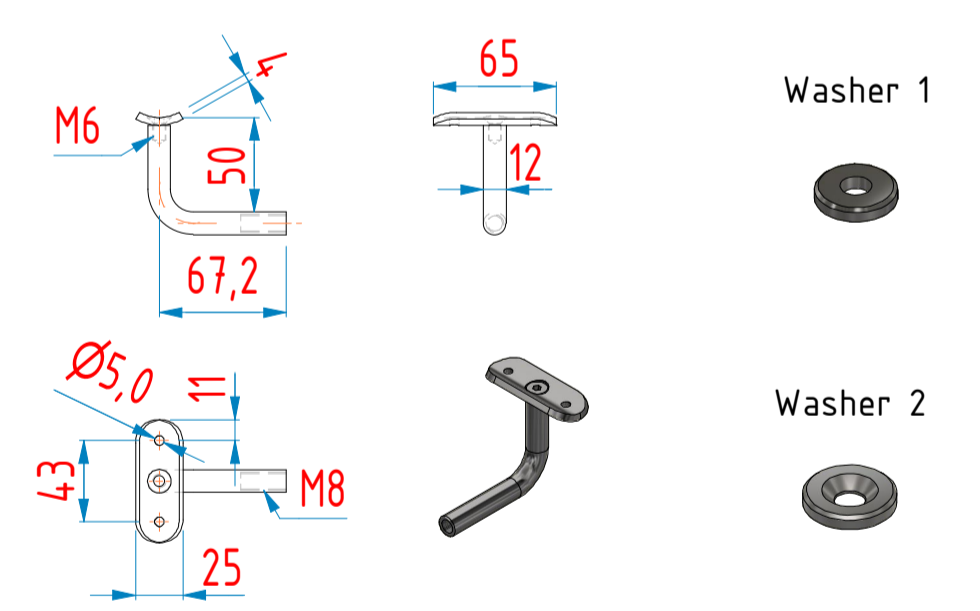
End part



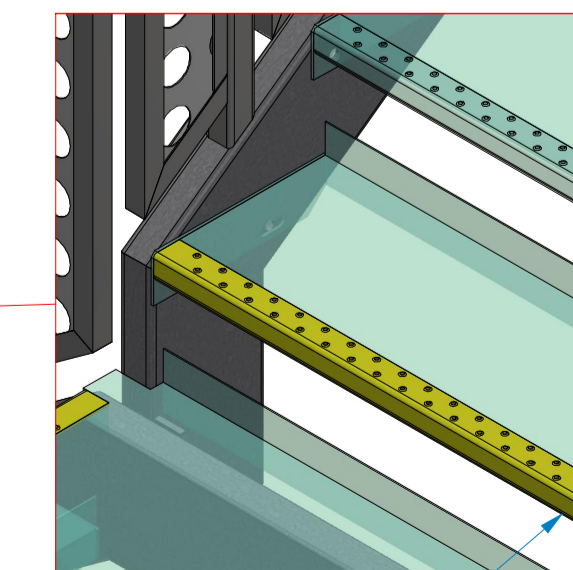
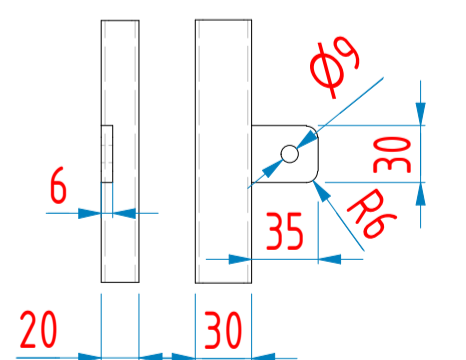
Assembly of handrail brackets to posts.



Handrail bracket qual. A4



connection to handrail bracket end part



Contrast marking

Comments

1. All indeterminate welds: T-welds as fillet welds a = 3
2. Connection of elements de as butt welds with full penetration
3. With hot-dip galvanized components, welds should be closed.

General Tolerances regarding the construction welded according to NS/SS-EN ISO 19920 class B					
Dimension	to 125	to 250	to 500	to 1000	to 1500
±0.30	±0.30	±0.30	±0.30	±0.30	±0.30
±0.40	±0.40	±0.40	±0.40	±0.40	±0.40
±0.50	±0.50	±0.50	±0.50	±0.50	±0.50
±0.60	±0.60	±0.60	±0.60	±0.60	±0.60
±0.70	±0.70	±0.70	±0.70	±0.70	±0.70
±0.80	±0.80	±0.80	±0.80	±0.80	±0.80
±0.90	±0.90	±0.90	±0.90	±0.90	±0.90
±1.00	±1.00	±1.00	±1.00	±1.00	±1.00

Material: Steel S235JR  
 NS/SS-EN 10025-2

(\*) only for powdercoated stairs

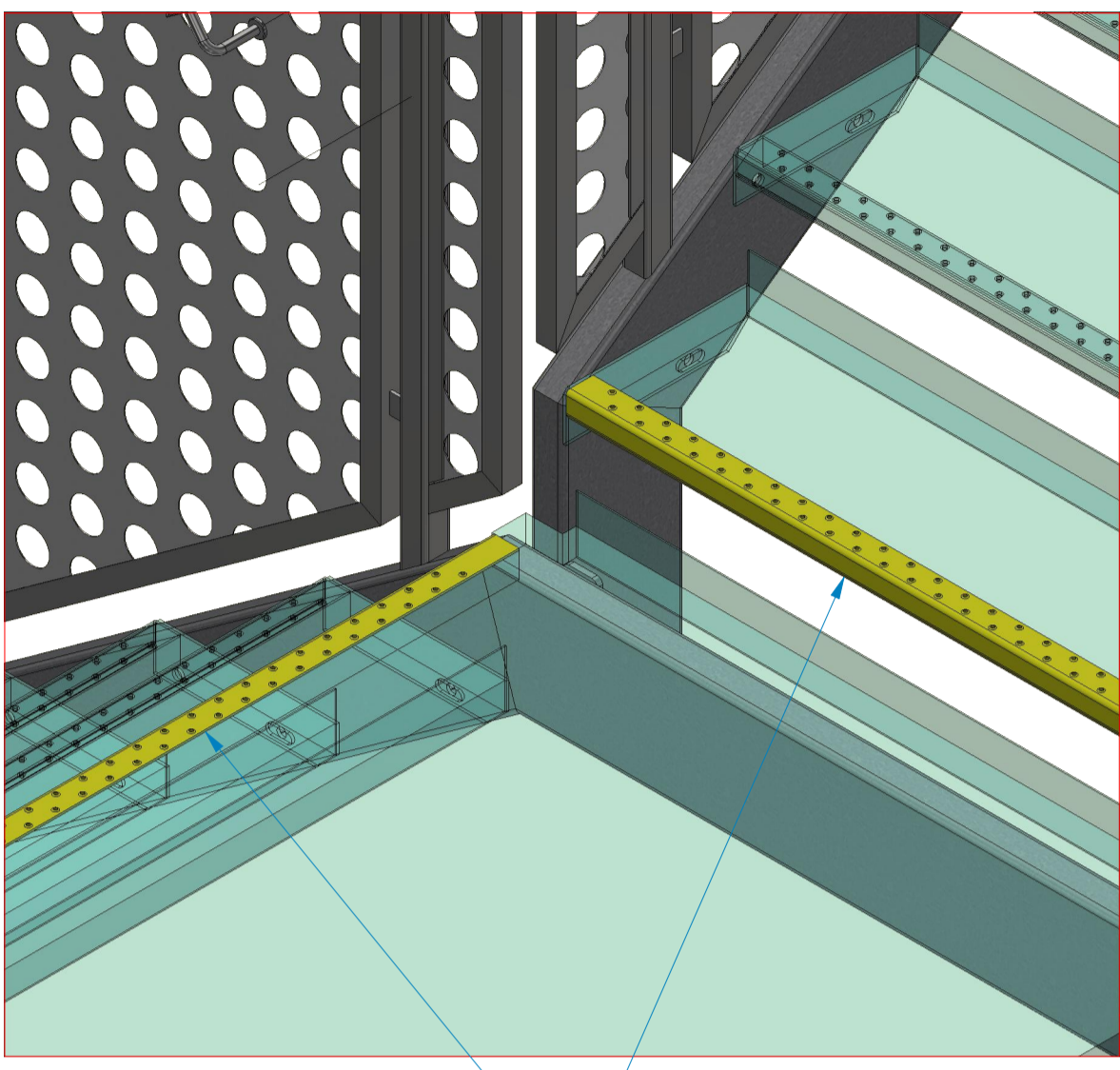
Fixing Elements	Standard	Reference	Quality
Rivet 4.8x12mm	DIN 7337	handrail	A4
M12 x 25 Hexagonal head bolt	DIN 933 / ISO 4017		H0G
M12 hexagonal nut	DIN 934 / ISO 4033		H0G
Washer for M12	DIN 125 / ISO 7089		H0G
M12 x 30 Hexagonal head bolt	DIN 933 / ISO 4017	(*)	A4
M12 hexagonal nut	DIN 934 / ISO 4033	(*)	A4
Washer for M12	DIN 125 / ISO 7089	(*)	A4

Vi ansvarar ej för trappans stabilitet vid infästningspunkter mot omkringliggande konstruktion.

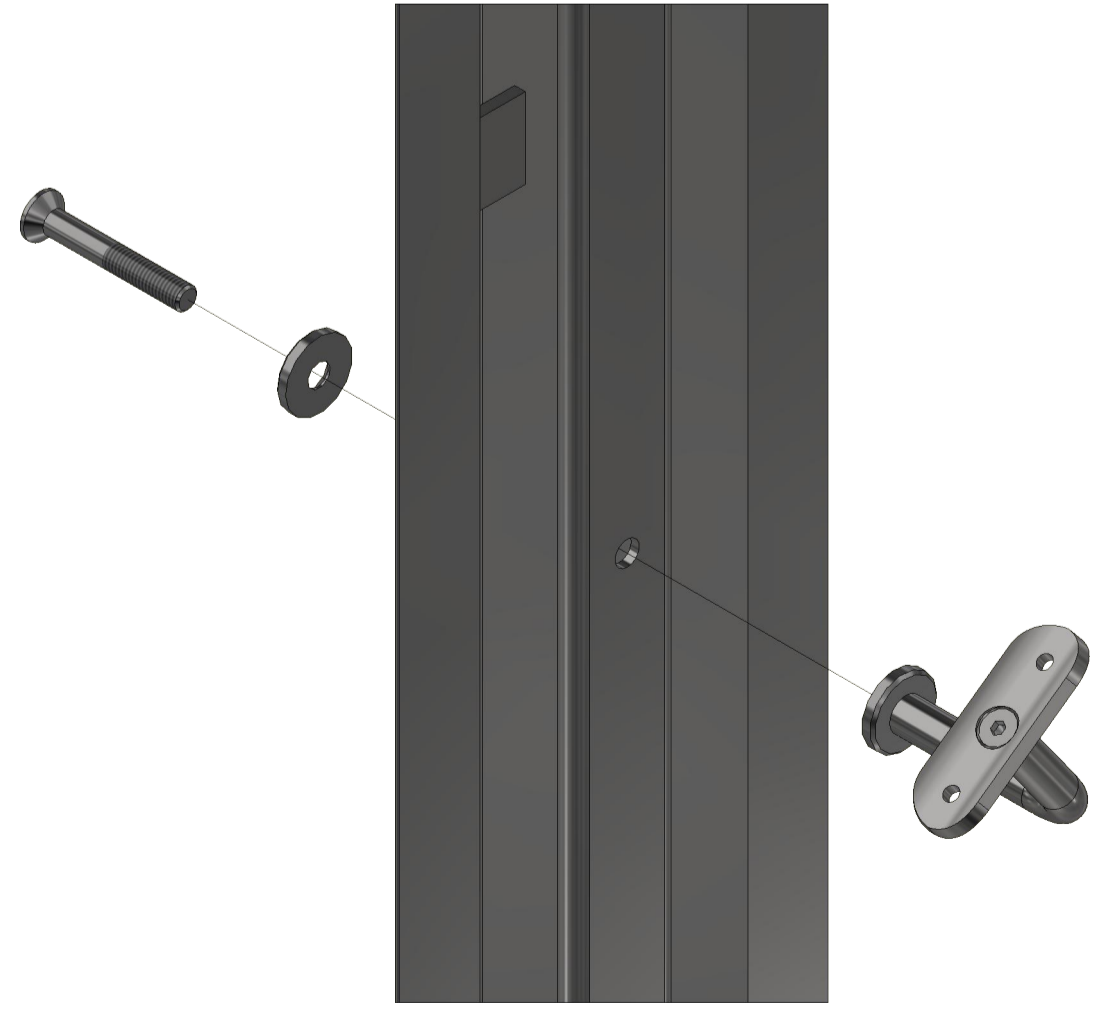
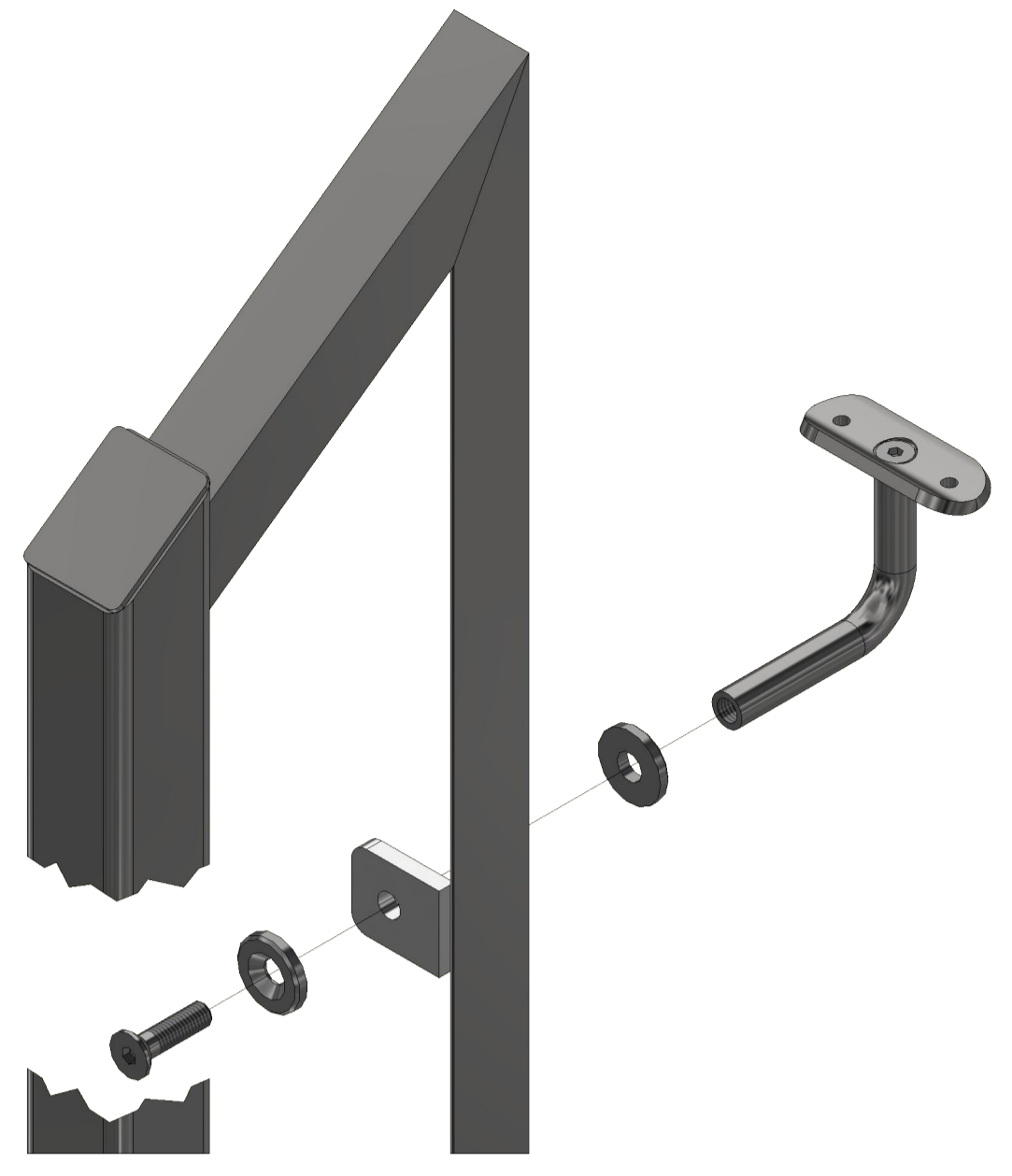
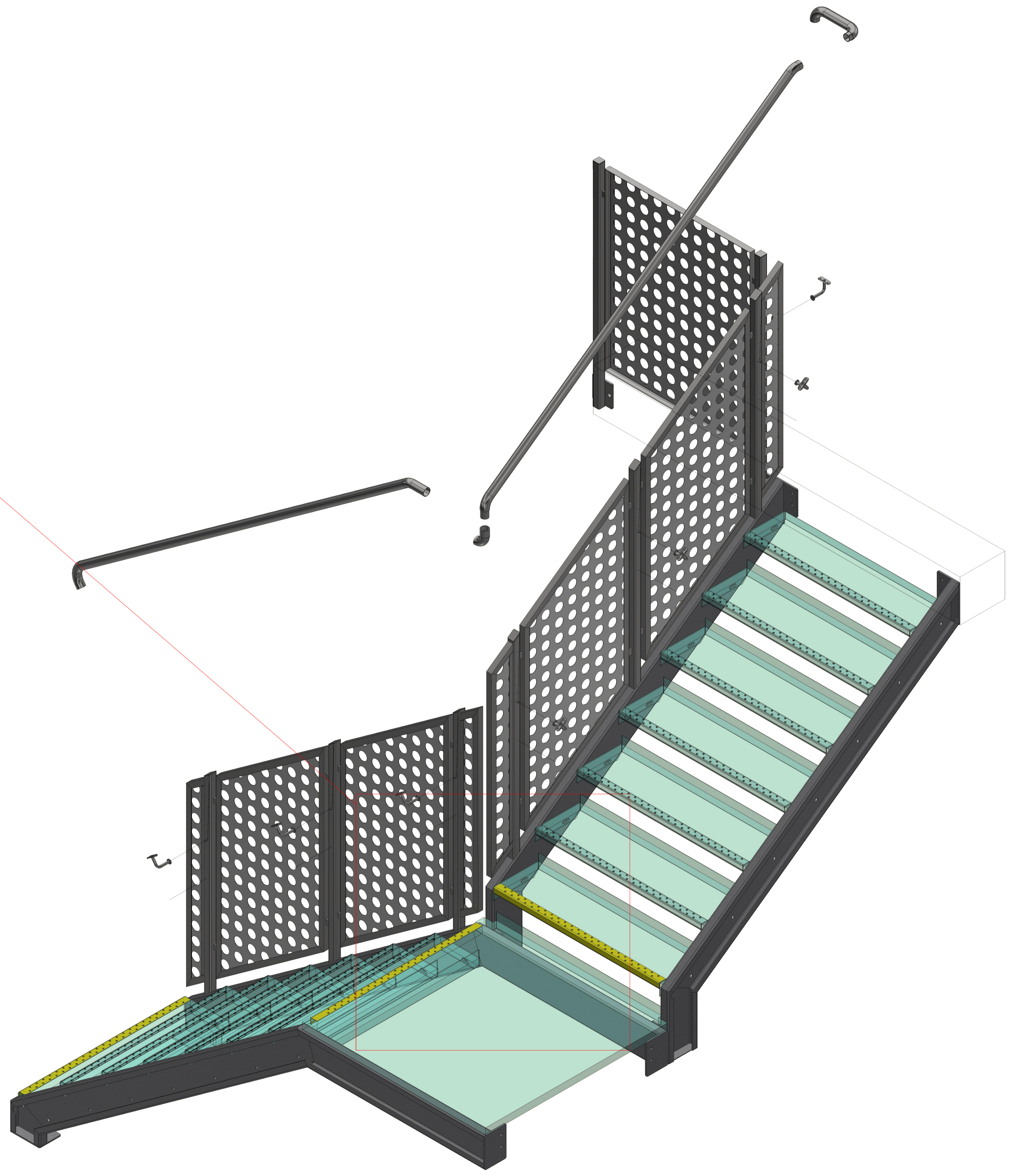
Material	Standard	Reference	Quality
Handrail	EN 12539		A4

Scale: 1:20  
 Date: 2023-12-20  
 Author: Varia P stair-L single.idw

# Assembly of Varia P stair-L single.idw



Contrast marking



Comments  
 1. All indeterminate welds: T-welds as fillet welds a = 3  
 2. Connection of elements do as butt welds with full penetration  
 3. With hot-dip galvanized components, welds should be closed

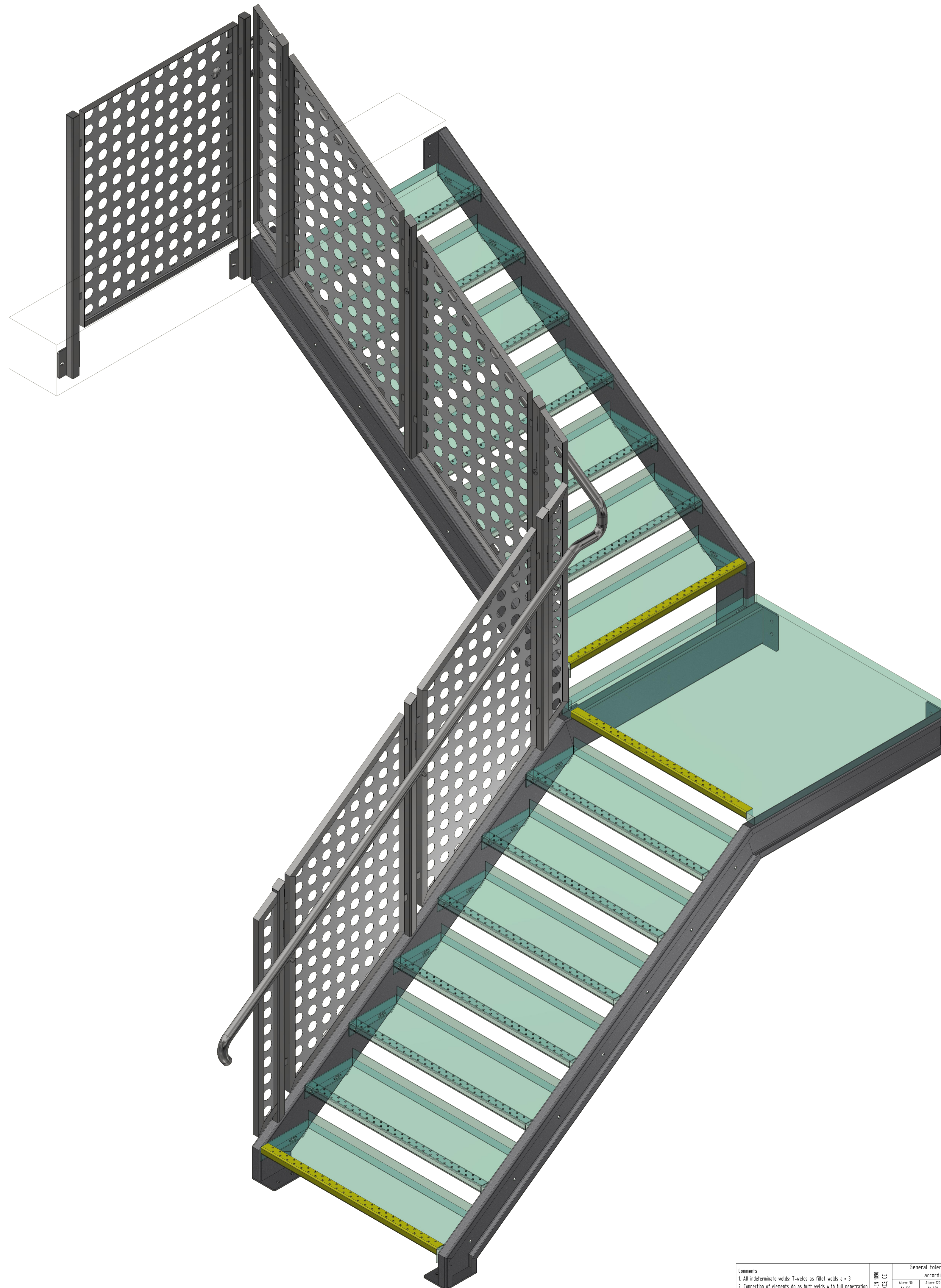
General tolerances regarding the construction welded according to NS/SS-EN ISO 13920 class B					
NS/SS-EN ISO 13920	Class	Dimension	Symbol	Value	Unit
13920-1	B	Thickness	t	±0,10	mm
13920-1	B	Length	L	±0,10	mm
13920-1	B	Width	B	±0,10	mm
13920-1	B	Radius	R	±0,10	mm
13920-1	B	Distance	e	±0,10	mm
13920-1	B	Angle	α	±0,10	mm

Vi ansvarar ej för trappans stabilitet vid infästningspunkter mot omkringliggande konstruktion.

Yabu Group AB  
 Box 1000, 121 21  
 Tel: +46 (0)8 441 1000  
 Fax: +46 (0)8 441 1001  
 Email: info@yabugroup.se

Scale: 1:20  
 Date: 2023-03-20  
 Drawing: Varia P stair-L single.idw

Varia P stair-L single.idw



Comments  
 1. All indeterminate welds: T-welds as fillet welds a = 3  
 2. Connection of elements to be built: welds with full penetration  
 3. With hot-dip galvanized components, welds should be closed

General tolerances regarding the construction welded according to NS/SS-EN ISO 13920 class B					
Dimension	Symbol	Value	Value	Value	Value
Stair width	W	±0.50	±0.50	±0.50	±0.50
Stair depth	D	±0.50	±0.50	±0.50	±0.50
Stair height	H	±0.50	±0.50	±0.50	±0.50
Stair length	L	±0.50	±0.50	±0.50	±0.50
Stair width	W	±0.50	±0.50	±0.50	±0.50

Steel S235JR  
 NS/SS-EN 10025-2

Vi ansvarar ej för trappans stabilitet vid infästningspunkter mot omkringliggande konstruktion.

EN ISO 9001:2015

Scale: 1:20

Author: [Name]

Project: Varia P stair-L single.idw