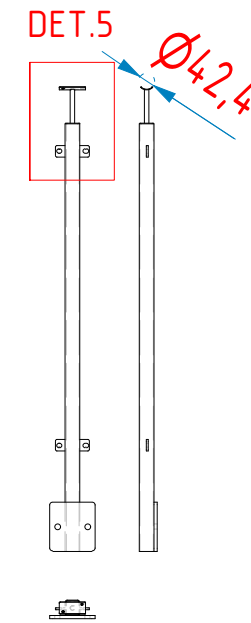
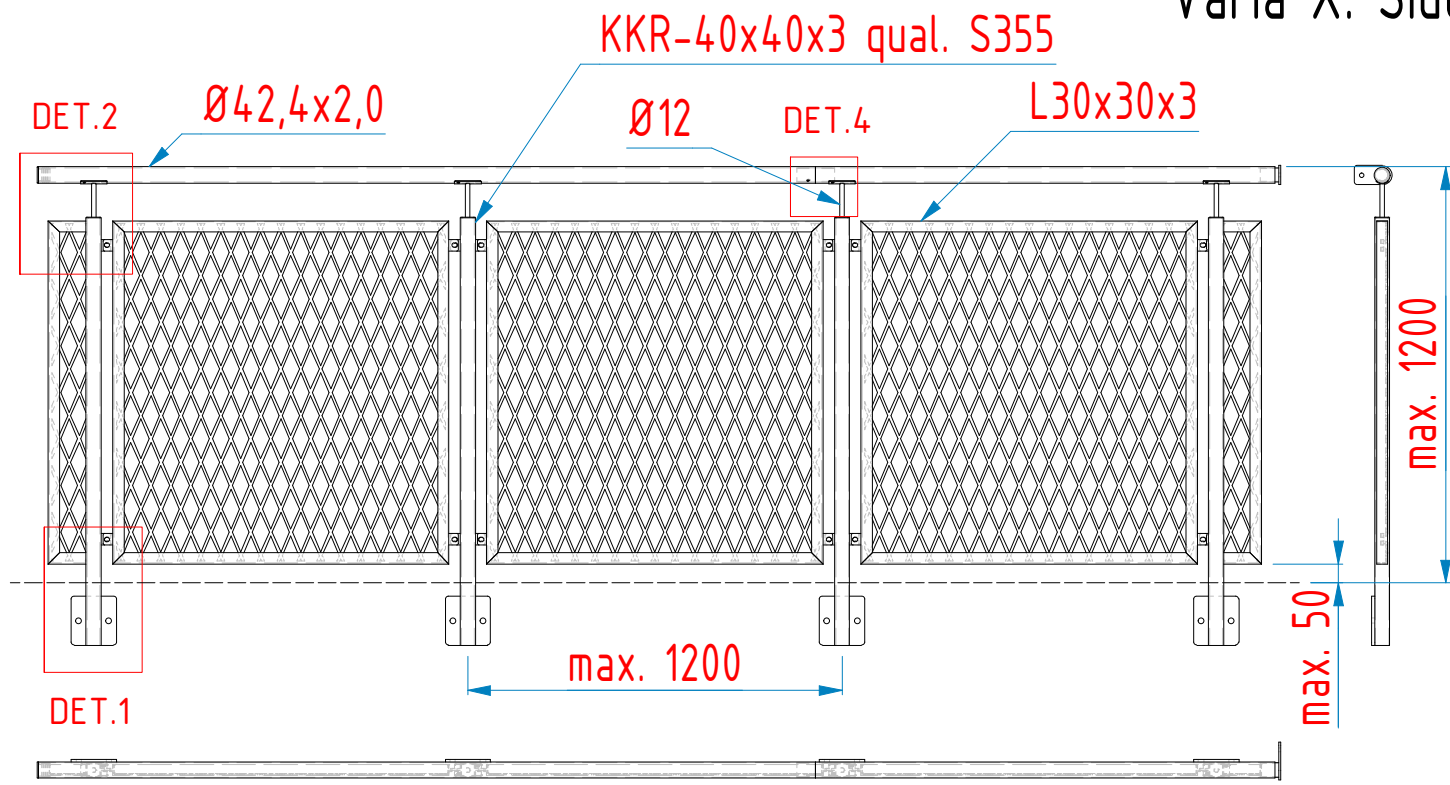
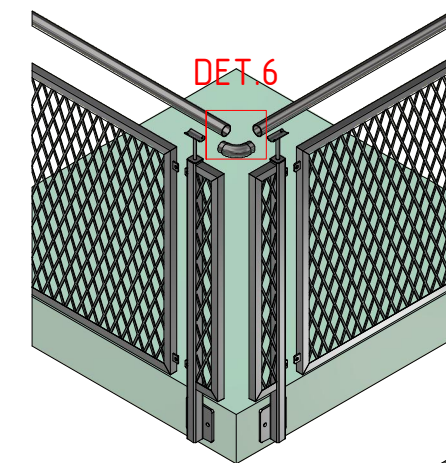
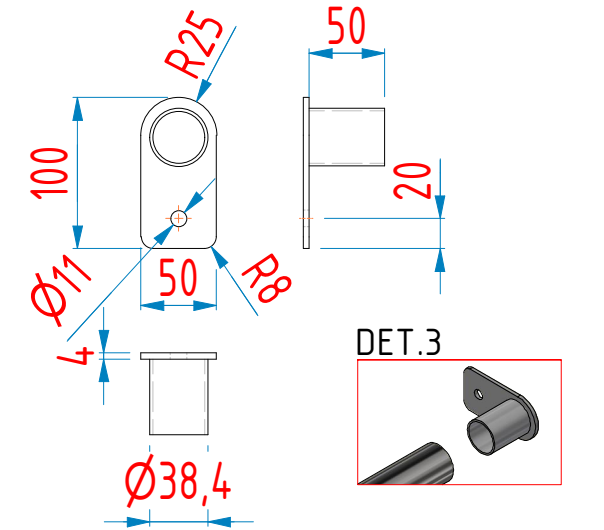
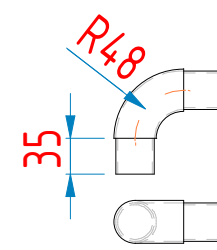


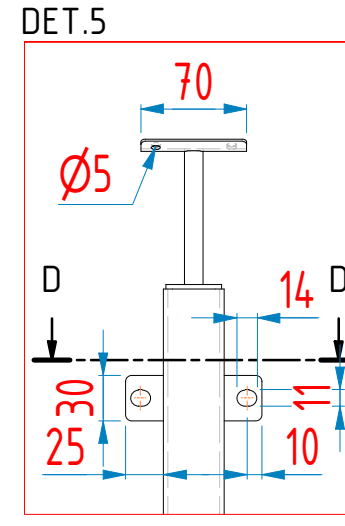
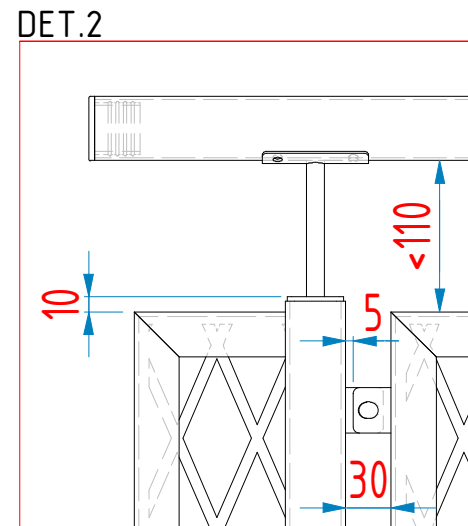
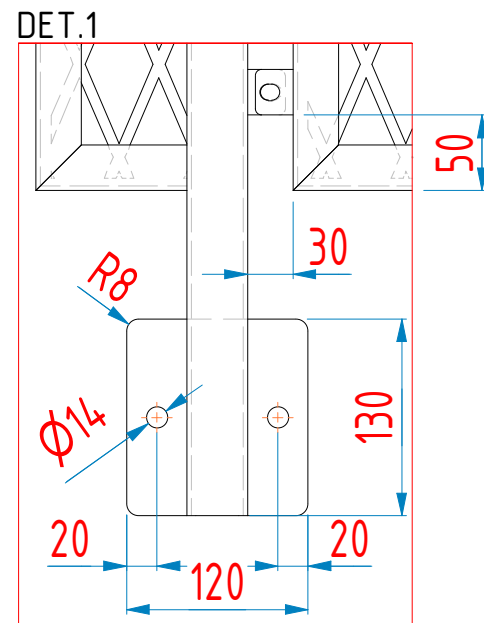
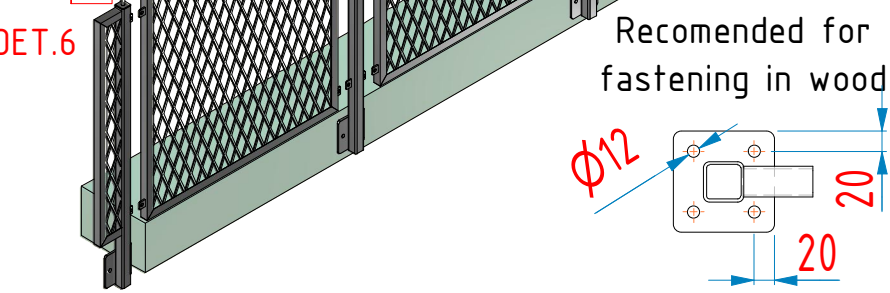
Varia X. Side mounted.idw



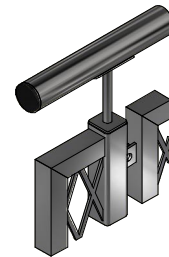
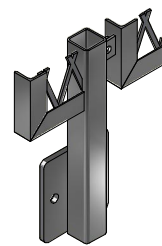
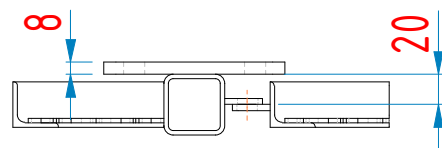
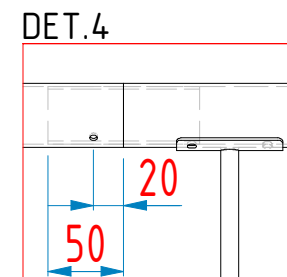
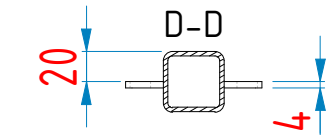
Bend for corners



DET.3



DET.6



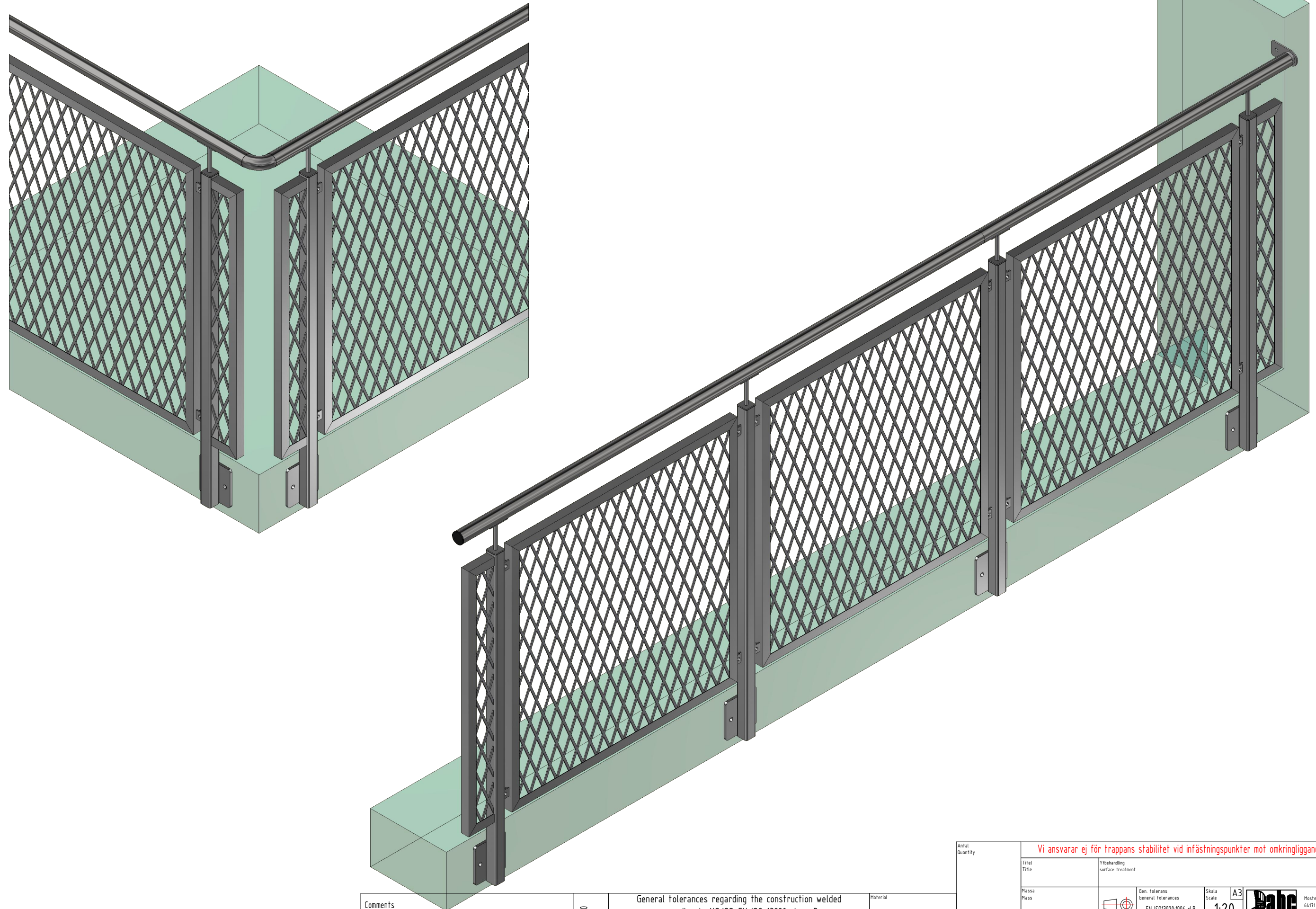
Varia X:
expanded metal 50x23/2.8x2 (long way mesh must be vertical
for children safety)
Welded to frame

Comments	General tolerances regarding the construction welded according to NS/SS-EN ISO 13920 class B						Material
	Above 30 to 120	Above 120 to 400	Above 400 to 1000	Above 1000 to 2000	Above 2000 to 4000	Above 4000	
1. All indeterminate welds: T-welds as fillet welds a = 3	±1	±2	±3	±4	±6	±8	Steel S235JR, Posts: S355J2H NS/SS-EN 10025-2
2. Connection of elements do as butt welds with full penetration							
3. With hot-dip galvanized components, welds should be closed.							

Fixing Elements	Standard	Quantity	Quality
Rivets 4,8x10mm	DIN 7337		A4
M10 x 25 Hexagonal bolt	DIN 933 / ISO 4017	1	
M10 Hexagon nuts	DIN 934 / ISO 4033	1	
Washer for M10	DIN 125 / ISO 7091	2	

Antal Quantity		Vi ansvarar ej för trappans stabilitet vid infästningspunkter mot omkringliggande konstruktion.	
Titel	Ytbehandling	surface treatment	
Modern S Rail			
Massa	Gen. Tolerans	Skala	A3
Mass	General Tolerances	Scale	1:20
	EN ISO13920:1996 cl.B		
Konstr.	110122-TH		
Rev.		Ritr.no DwgNo Varia X. Side mounted.idw Rev.	

Varia X. Side mounted.idw assembled



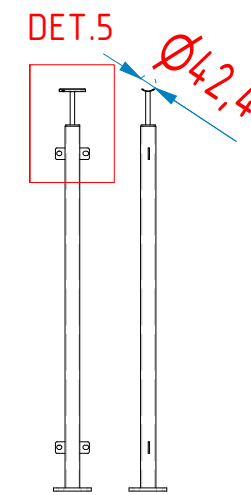
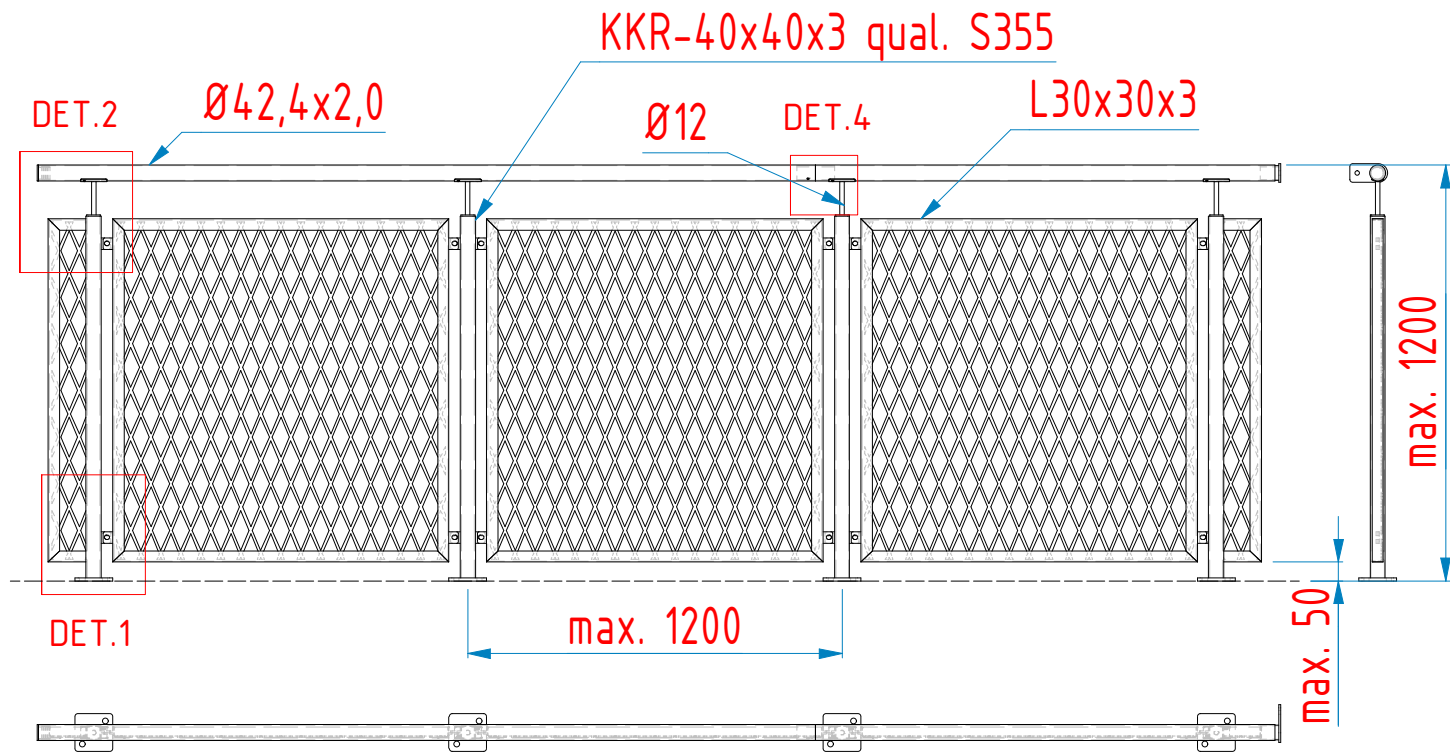
Comments
 1. All indeterminate welds: T-welds as fillet welds a = 3
 2. Connection of elements do as butt welds with full penetration
 3. With hot-dip galvanized components, welds should be closed.

General tolerances regarding the construction welded according to NS/SS-EN ISO 13920 class B					
Above 30 to 120	Above 120 to 400	Above 400 to 1000	Above 1000 to 2000	Above 2000 to 4000	Above 4000
±1	±2	±3	±4	±6	±8

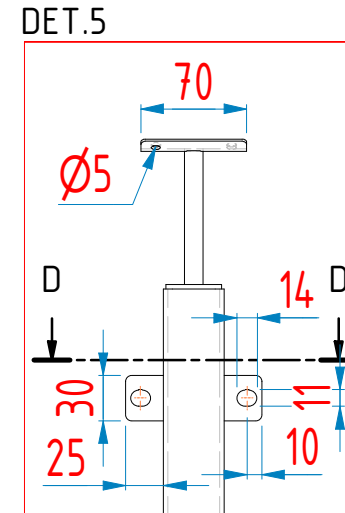
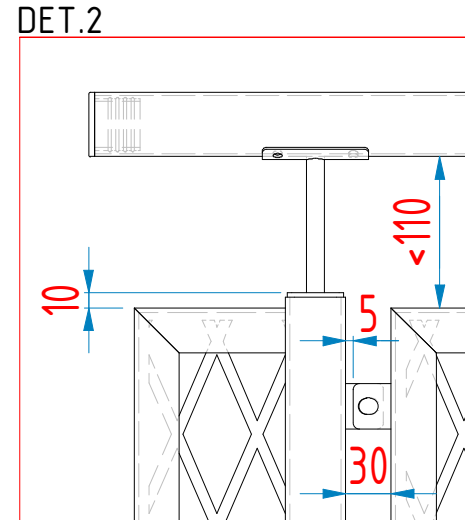
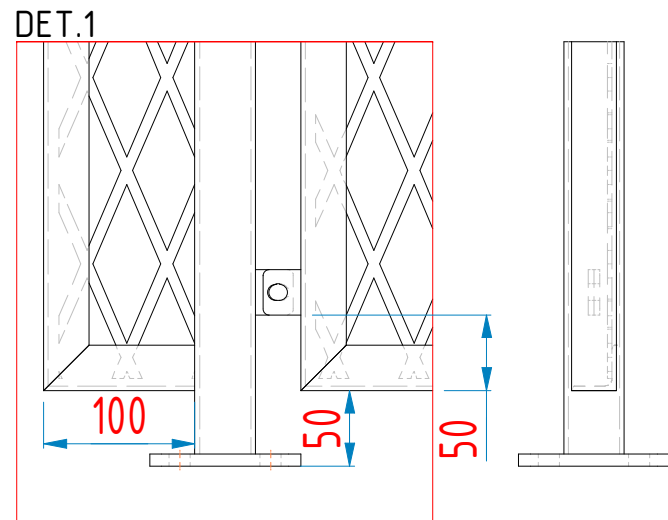
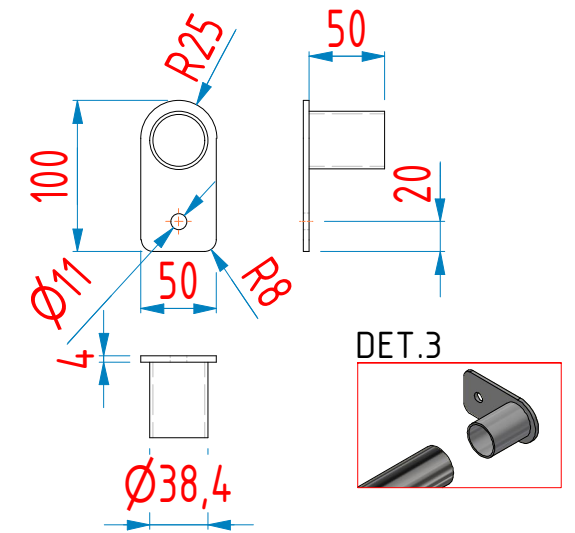
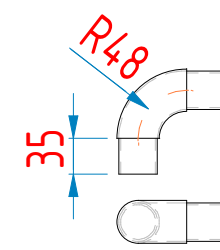
Material
 Steel S235JR,
 Posts: S355J2H
 NS/SS-EN 10025-2

Antal Quantity		Vi ansvarar ej för trappans stabilitet vid infästningspunkter mot omkringliggande konstruktion.			
Titel Title		Ytbehandling surface treatment		Skala Scale	
Massa Mass		Gen. Tolerans General tolerances EN ISO13920:1996 cl.B		A3 1:20	
Konstr. 110122-TH		Ref.dwg		Ritn.nr DwgNo	
Guld		abc SOLUTIONS		Rev	
		Moster Skuggas Väg 7 64171 ARVIKA SWEDEN Tel: 0571-181077 www.abcsolutions.se		Varia X. Side mounted.idw	

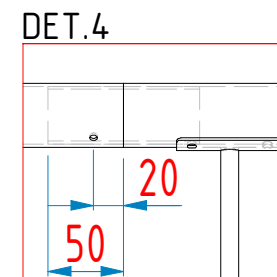
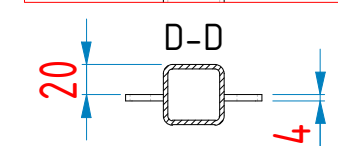
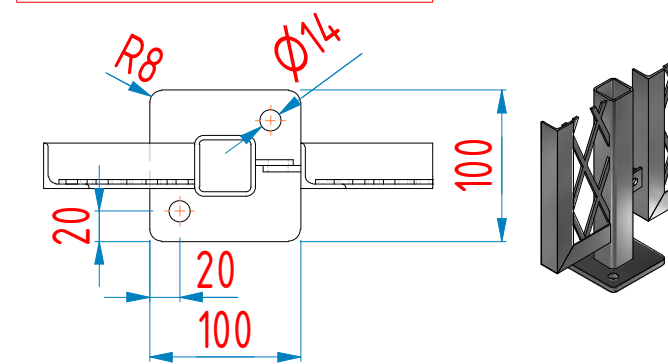
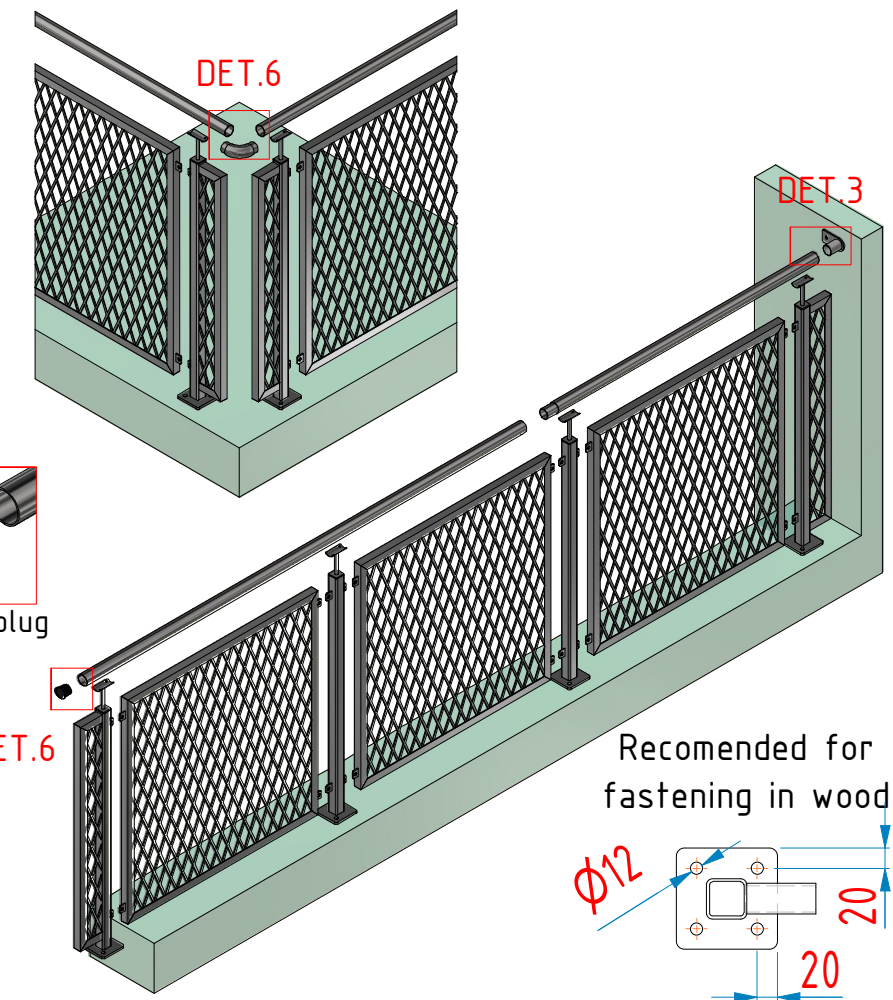
Varia X. Top mounted.idw



Bend for corners



Plastic plug



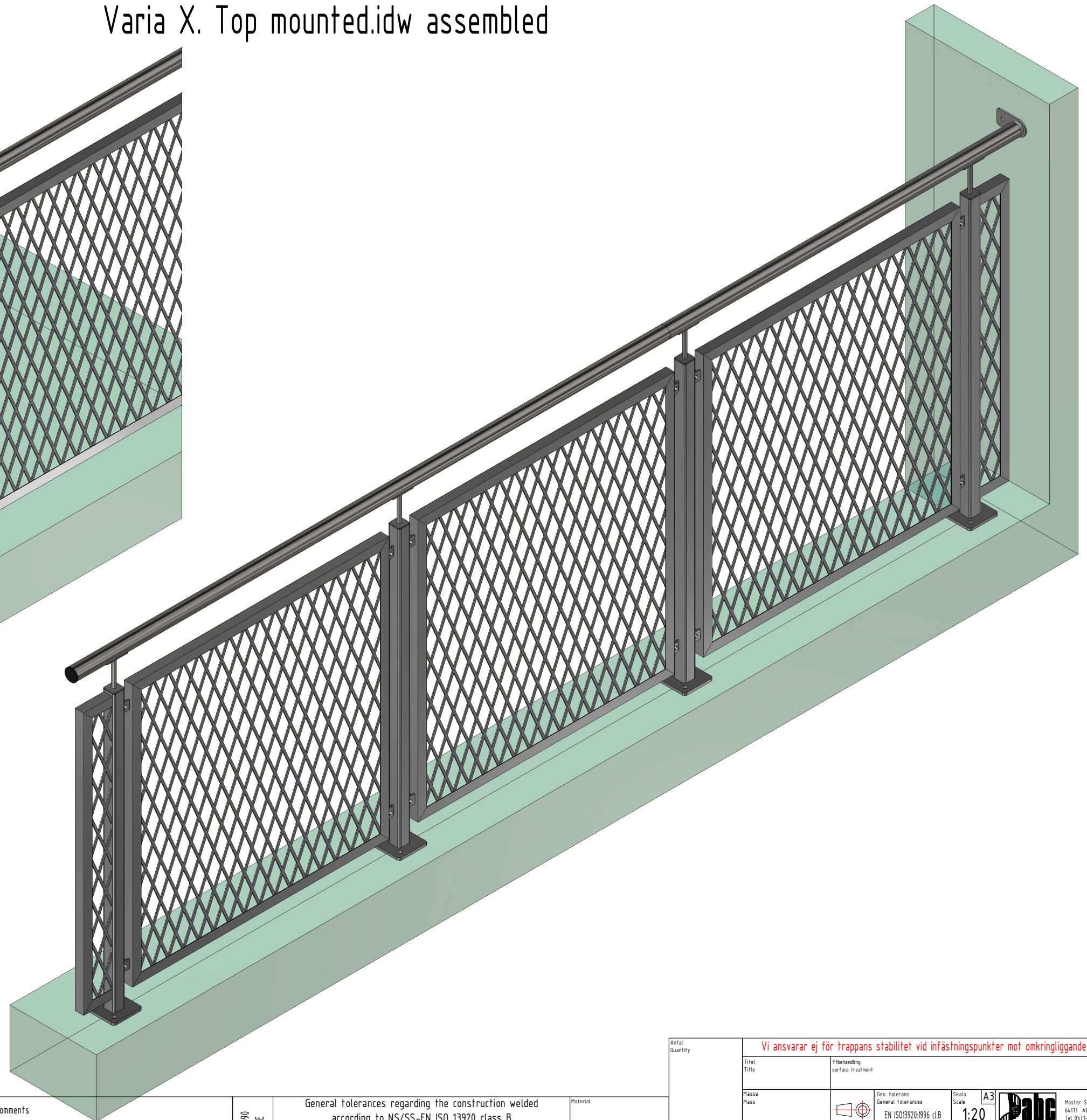
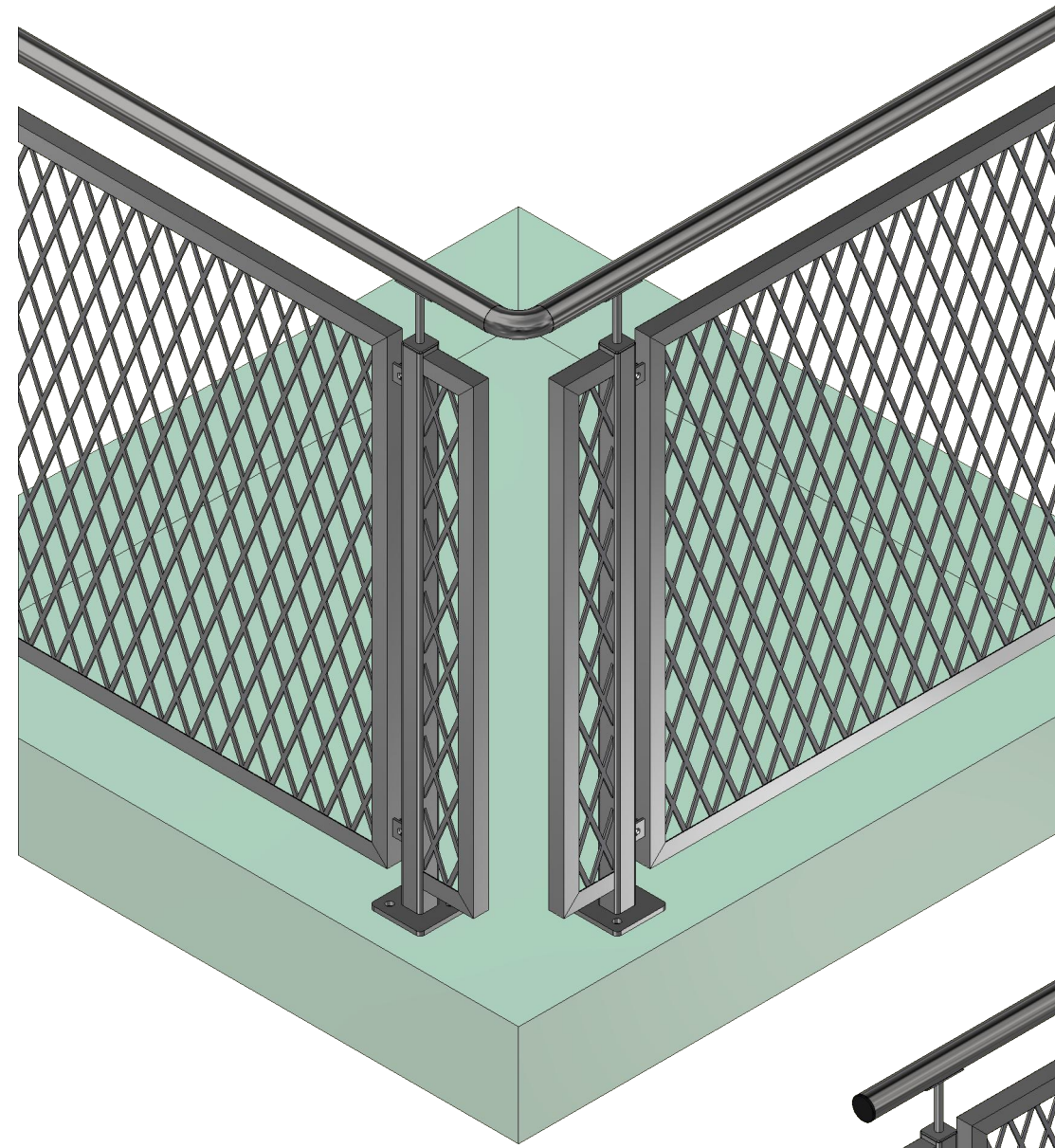
Varia X:
expanded metal 50x23/2.8x2 (long way mesh must be vertical for children safety)
Welded to frame

Fixing Elements	Standard	Quantity	Quality
Rivets 4,8x10mm	DIN 7337		A4
M10 x 25 Hexagonal bolt	DIN 933 / ISO 4017	1	
M10 Hexagon nuts	DIN 934 / ISO 4033	1	
Washer for M10	DIN 125 / ISO 7091	2	

Antal Quantity				Vi ansvarar ej för trappans stabilitet vid infästningspunkter mot omkringliggande konstruktion.			
Titel Title		Ytbehandling surface treatment		Skala Scale		A3	
Modern S Rail				1:20		abc SOLUTIONS	
Massa Mass		Gen. Tolerans General tolerances		EN ISO13920:1996 cl.B		Moster Skuggas Väg 7 64171 ARVIKA SWEDEN Tel: 0571-181077 www.abc-solutions.se	
Konstr. 110122-TH		Guld.		Ritnr. DwgNo		Varia X. Top mounted.idw	

Comments	General tolerances regarding the construction welded according to NS/SS-EN ISO 13920 class B						Material
	Above 30 to 120	Above 120 to 400	Above 400 to 1000	Above 1000 to 2000	Above 2000 to 4000	Above 4000	
1. All indeterminate welds: T-welds as fillet welds a = 3	±1	±2	±3	±4	±6	±8	Steel S235JR, Posts: S355J2H NS/SS-EN 10025-2
2. Connection of elements do as butt welds with full penetration							
3. With hot-dip galvanized components, welds should be closed.							


Varia X. Top mounted.idw assembled



Comments
 1. All indeterminate welds: I-welds as fillet welds a = 3
 2. Connection of elements do as butt welds with full penetration
 3. With hot-dip galvanized components, welds should be closed.

General tolerances regarding the construction welded according to NS/SS-EN ISO 13920 class B					
Above 30 to 120	Above 120 to 400	Above 400 to 1000	Above 1000 to 2000	Above 2000 to 4000	Above 4000
±1	±2	±3	±4	±6	±8

Material
 Steel S235JR,
 Posts: S355J2H
 NS/SS-EN 10025-2

Antal Quantity		Vi ansvarar ej för trappans stabilitet vid infästningspunkter mot omkringliggande konstruktion.			
Titel Title		Ytbehandling surface treatment		Skala Scale	
Massa Mass		Gen. Tolerans General tolerances EN ISO13920:1996 cl.B		A3 1:20	
Konstr. 110127-TM		Ref.dwg's		 Muster Skuggas Väg 7 64171 ARVIKA SWEDEN Tel: 0571-181077 www.abcsolutions.se	
Guld		Ritn.nr DwgNo		Rev. X. Top mounted.idw	