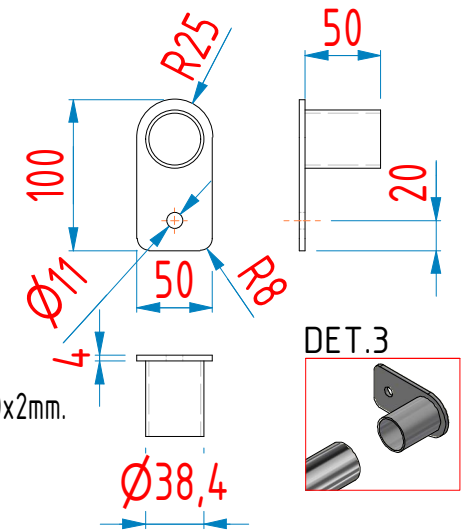
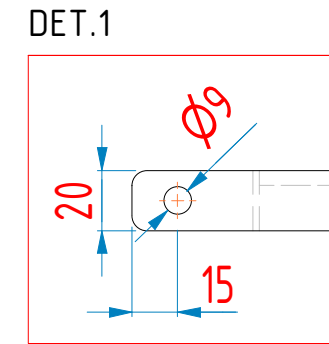
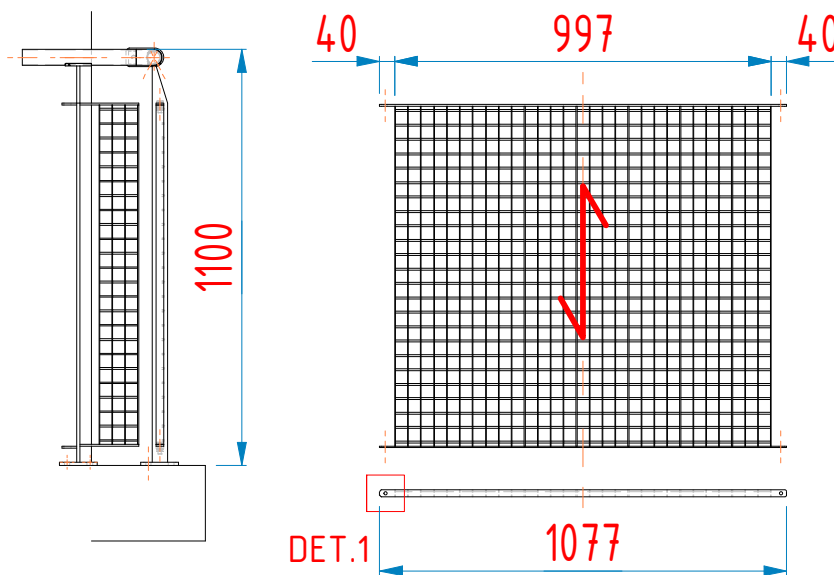
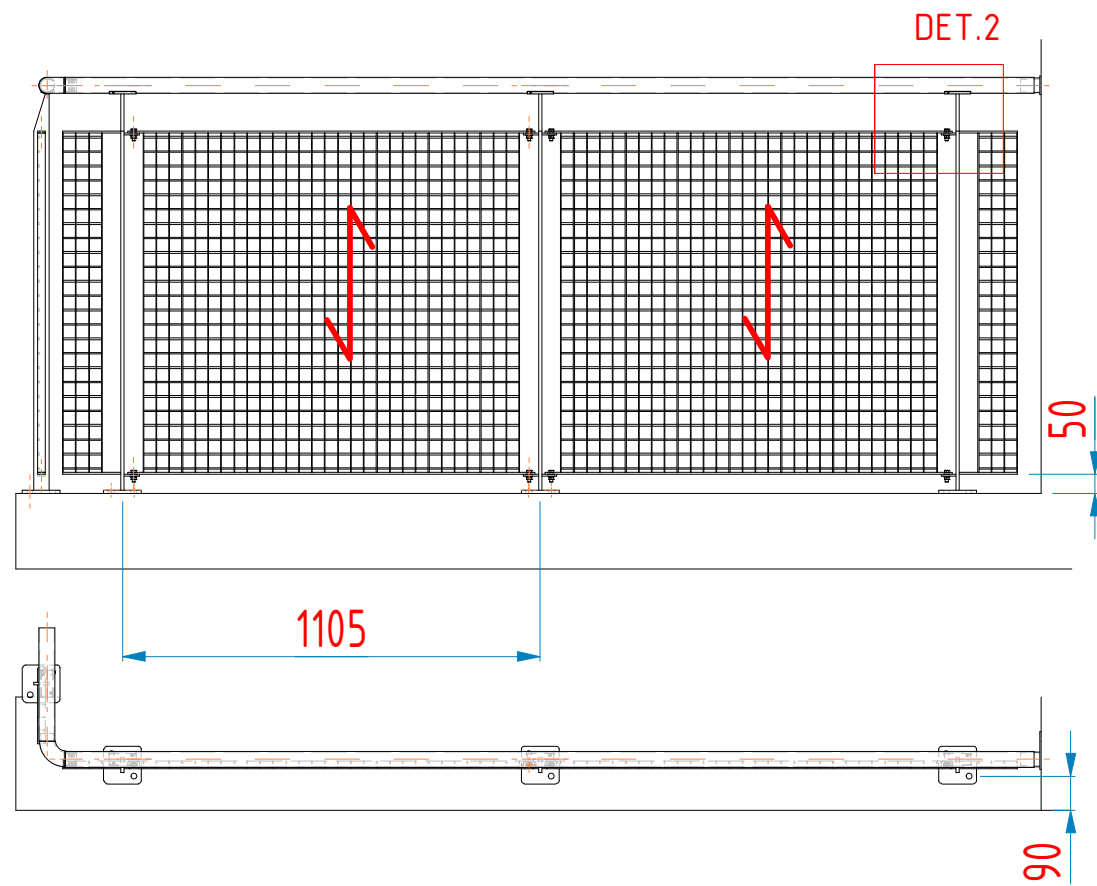
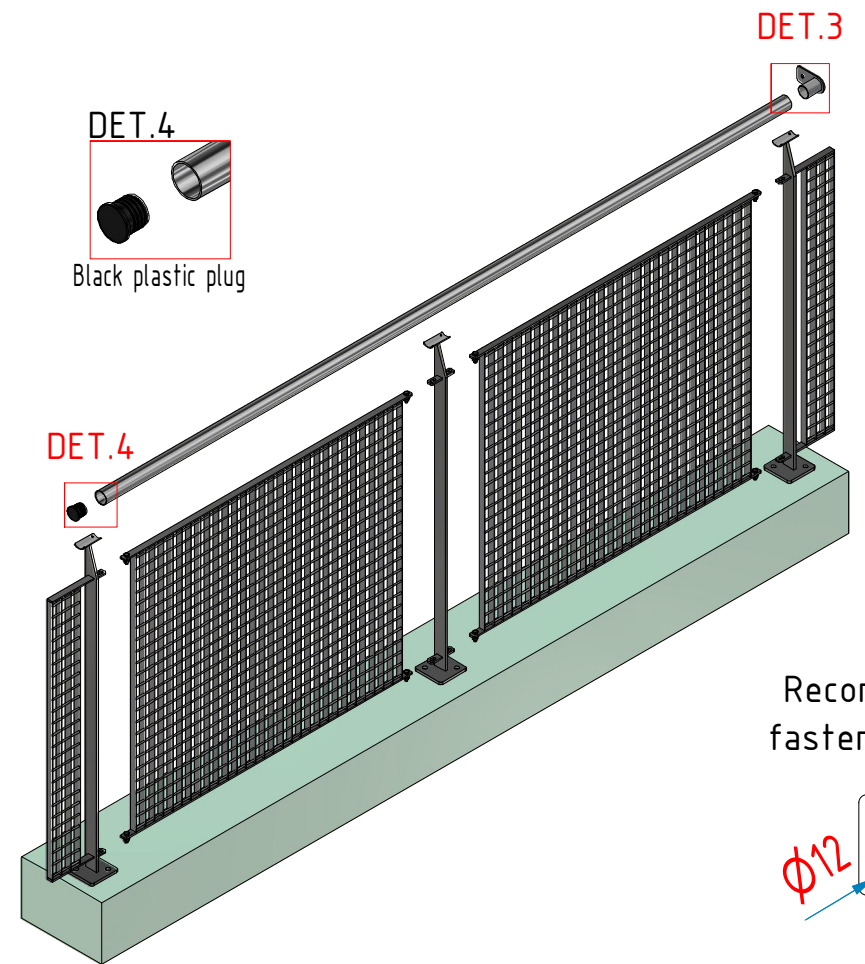
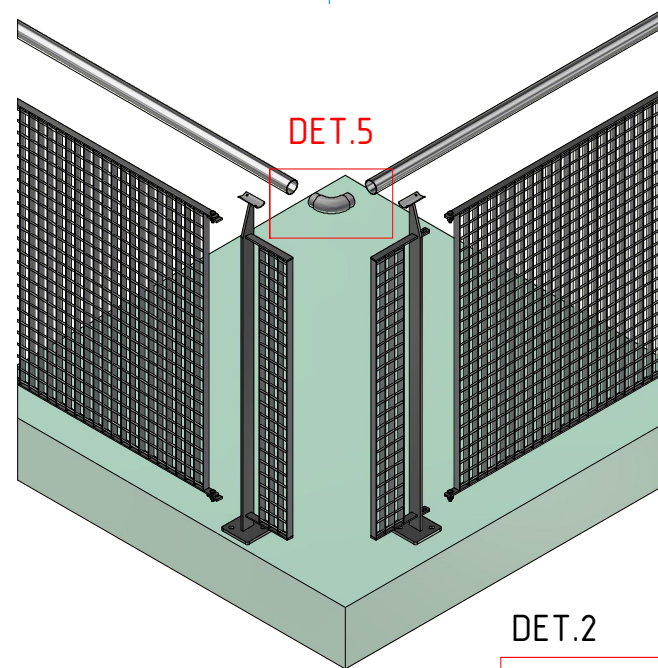
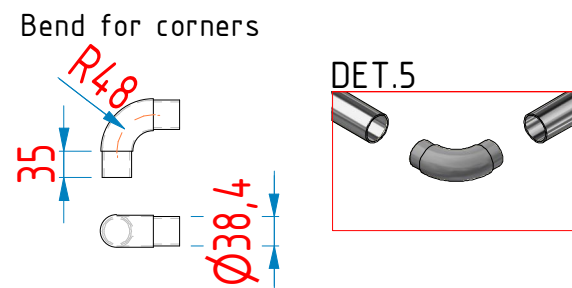
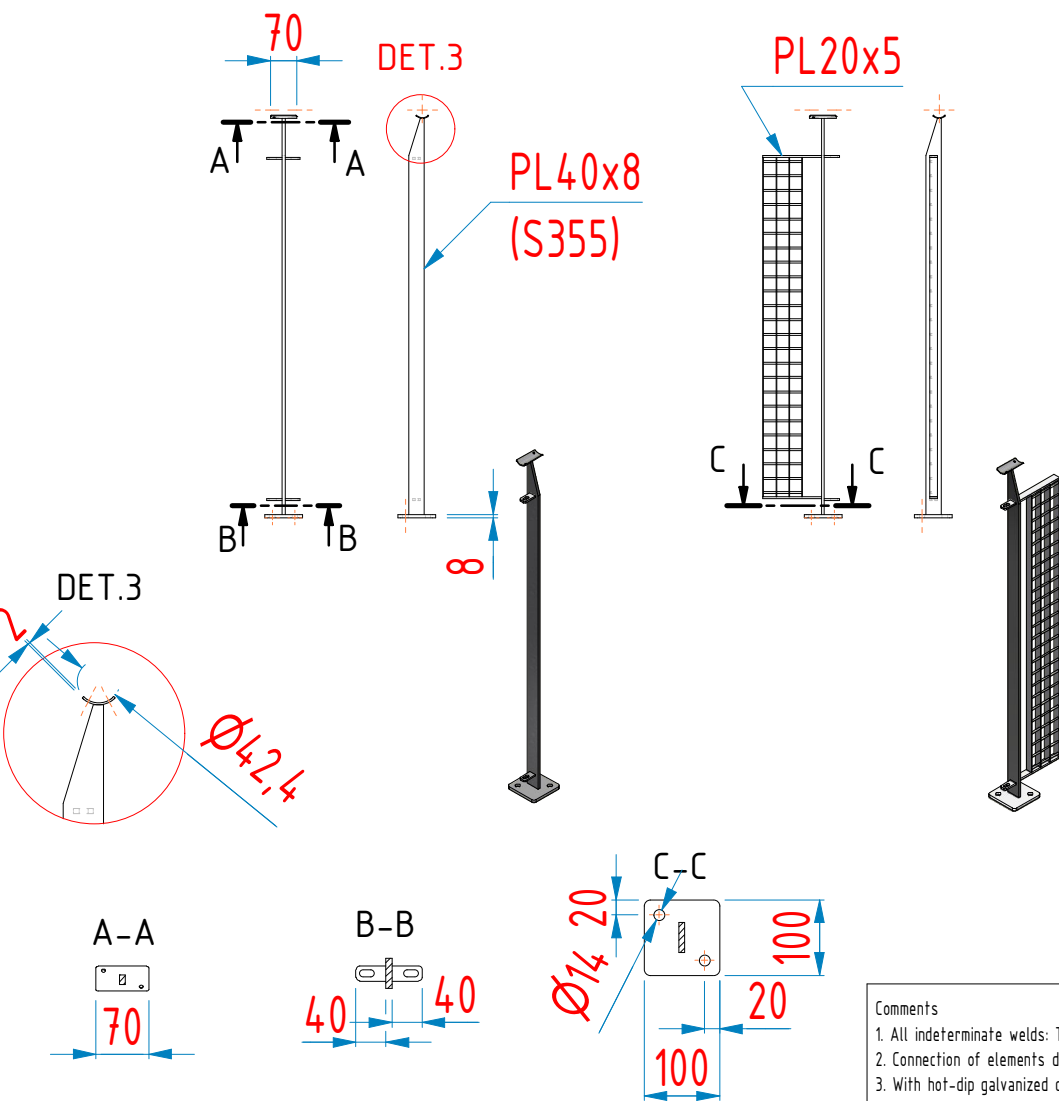


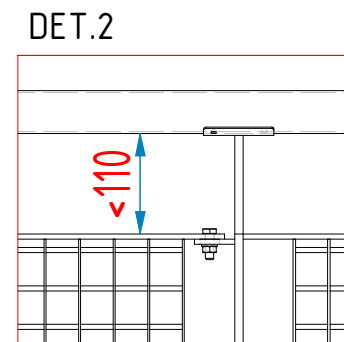
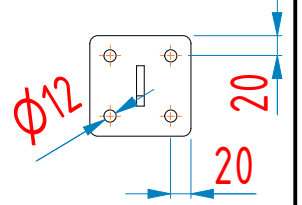
# Durken Railing. Top mounted.idw



Press-welded grating mesh size 34.3x38.1/20x2mm.  
Mesh must be centered in the frame.



Recommended for fastening in wood

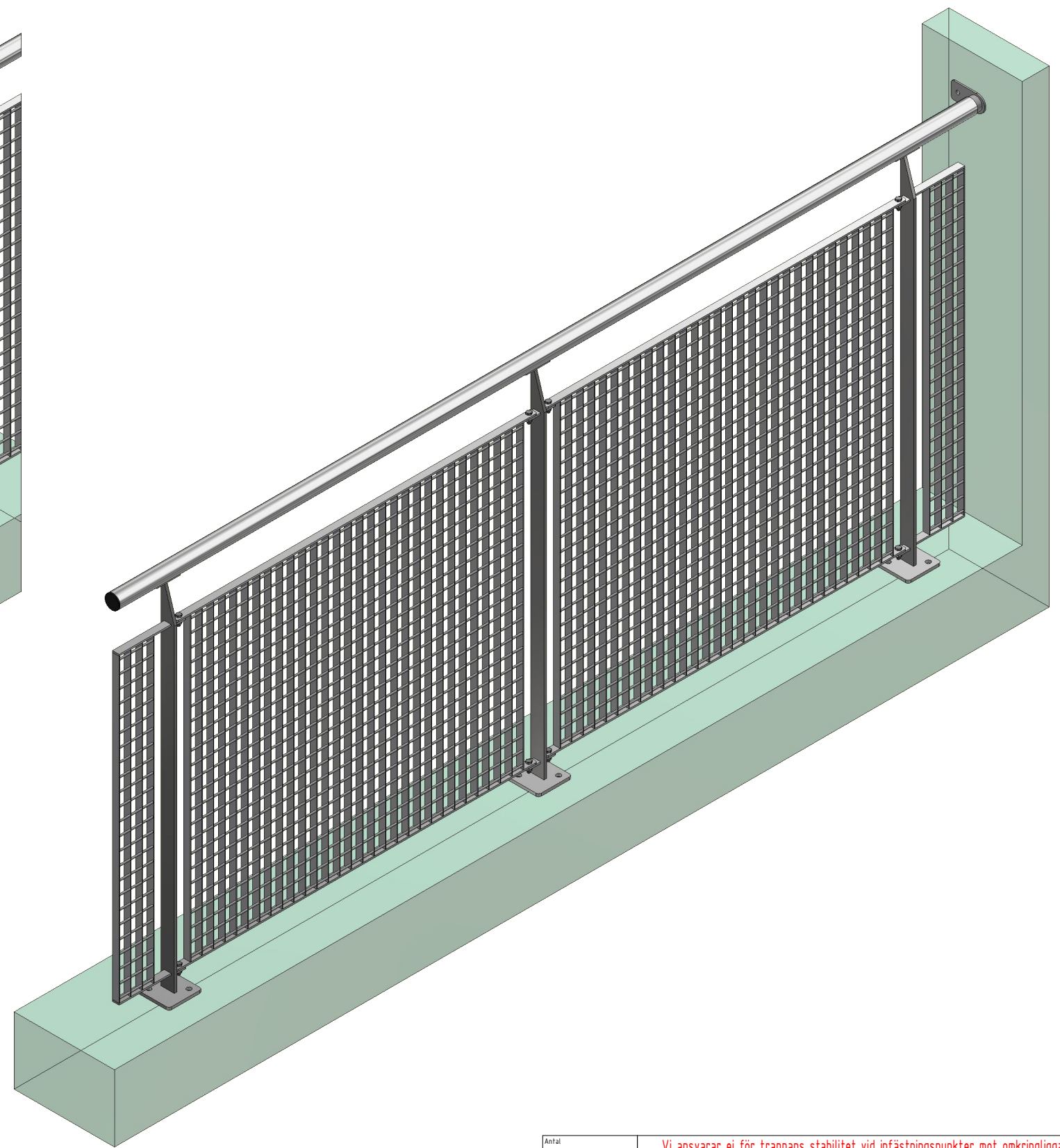
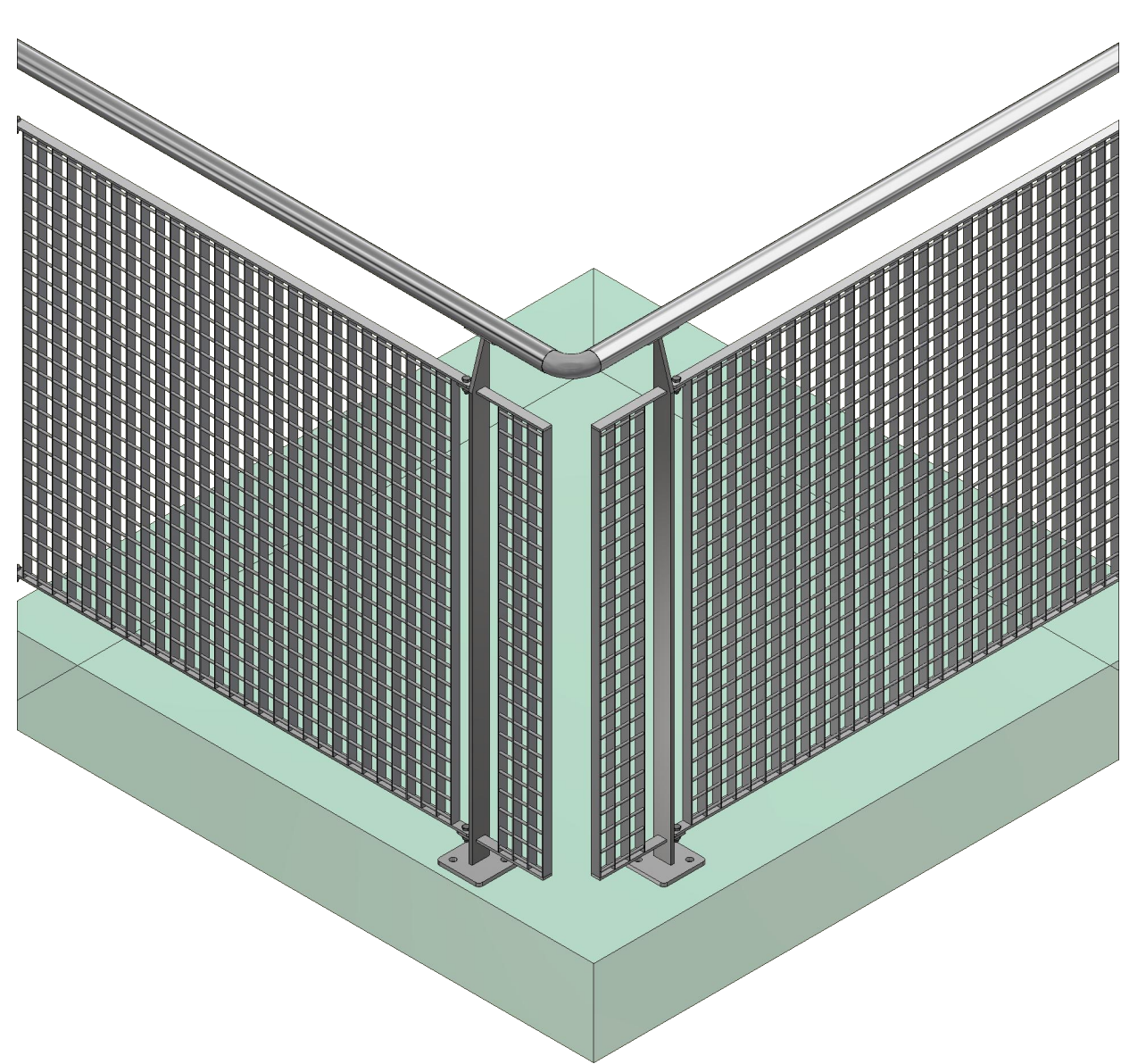


Fixing Elements	Standard	Quantity	Quality
Rivets 4,8x10mm	DIN 7337		A4
M8 x 25 Hexagonal bolt	DIN 933		HDG
M8 Hexagon nuts	DIN 934 / ISO 4033		HDG
Washer for M8	DIN 125 / ISO 7091		HDG

Anställd Quantity		Vi ansvarar ej för trappans stabilitet vid infästningspunkter mot omkringliggande konstruktion.	
Titel Title	Ytbehandling surface treatment	Gen. Tolerans General tolerances EN ISO13920:1996 cl.B	Skala Scale 1:20
Massa Mass	Ref.dwg		
Konstr. DwgNo	110122-TM	Durken Railing. Top mounted.idw	

Comments	General tolerances regarding the construction welded according to NS/SS-EN ISO 13920 class B						Material Steel S235JR NS/SS-EN 10025-2
	Above 30 to 120	Above 120 to 400	Above 400 to 1000	Above 1000 to 2000	Above 2000 to 4000	Above 4000	
1. All indeterminate welds: T-welds as fillet welds a = 3	±1	±2	±3	±4	±6	±8	
2. Connection of elements do as butt welds with full penetration							
3. With hot-dip galvanized components, welds should be closed.							

# Assembly of Durken Railing. Top mounted.idw




Comments  
 1. All indeterminate welds: T-welds as fillet welds  $a = 3$   
 2. Connection of elements do as butt welds with full penetration  
 3. With hot-dip galvanized components, welds should be closed.

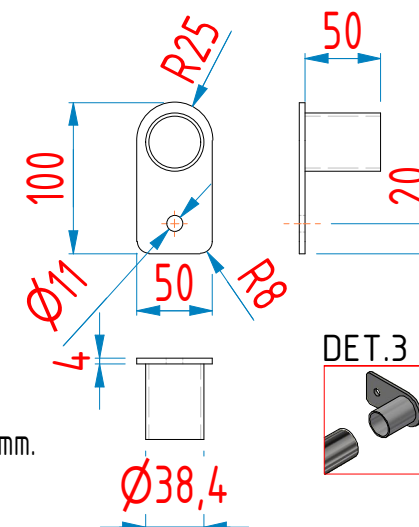
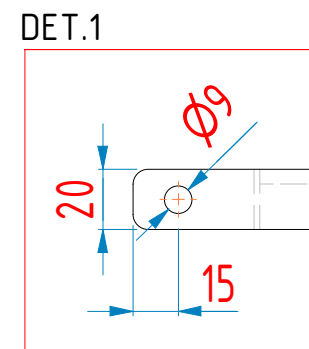
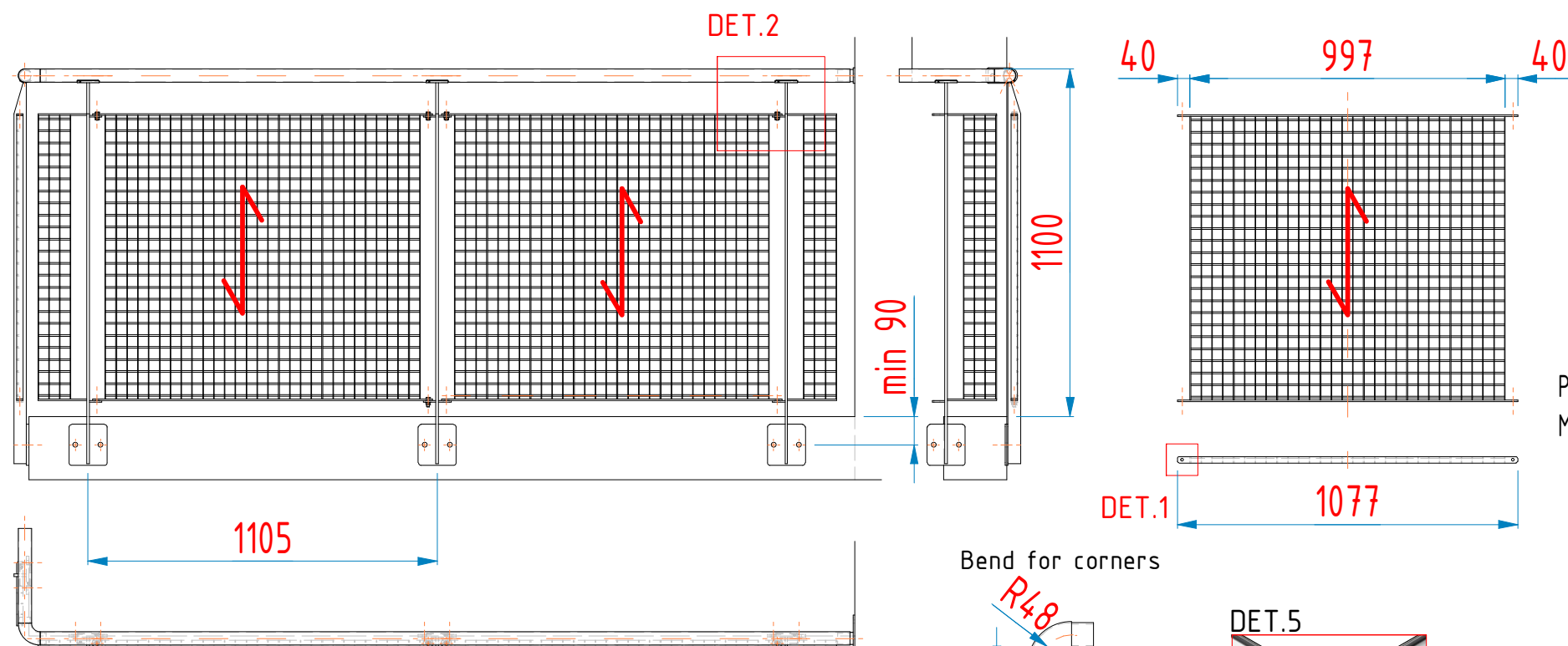
PN-EN 1090  
 EXC2, CE

General tolerances regarding the construction welded according to NS/SS-EN ISO 13920 class B					
Above 30 to 120	Above 120 to 400	Above 400 to 1000	Above 1000 to 2000	Above 2000 to 4000	Above 4000
±1	±2	±3	±4	±6	±8

Material  
 Steel S235JR  
 NS/SS-EN 10025-2

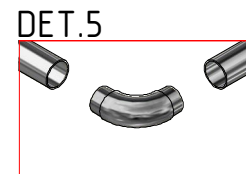
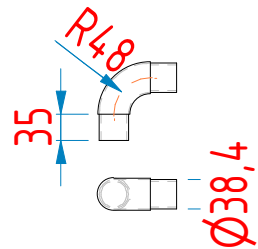
Antal Quantity		Vi ansvarar ej för trappans stabilitet vid infästningspunkter mot omkringliggande konstruktion.			
Titel Title		Ytbehandling surface treatment		Skala Scale	
Massa Mass		Gen. Tolerans General tolerances EN ISO13920:1996 cl.B		A3 1:20	
Konstr. 110122-TM		Ref.dwg		 Muster Skuggas Väg 7 64171 ARVIKA SWEDEN Tel: 0571-181077 www.abcsolutions.se	
Guld		Ritn.nr DwgNo		Durken Railing. Top mounted.idw	
				Rev.	

# Durken Railing. Side mounted.idw



Press-welded grating mesh size 34.3x38.1/20x2mm.  
Mesh must be centered in the frame.

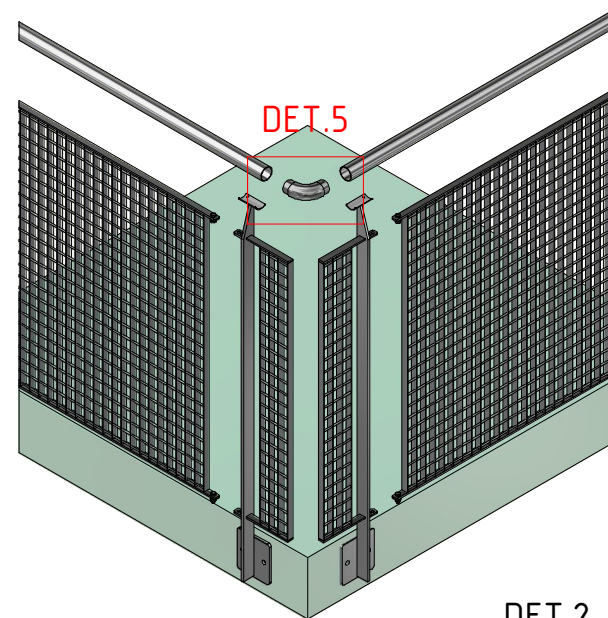
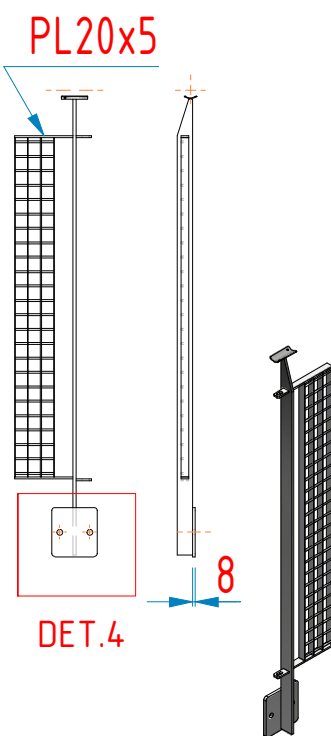
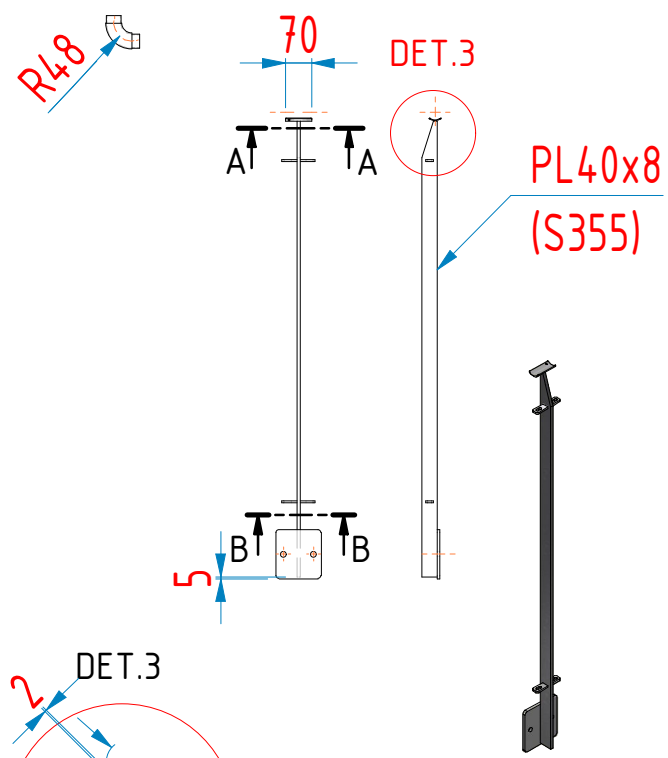
Bend for corners



DET.4



Black plastic plug

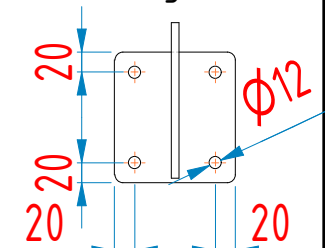


DET.4

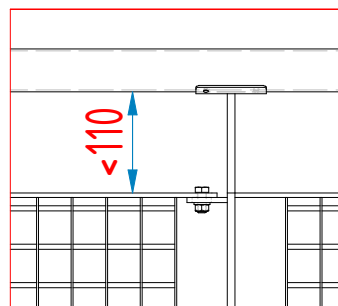


Black plastic plug

Recommended for fastening in wood



DET.2



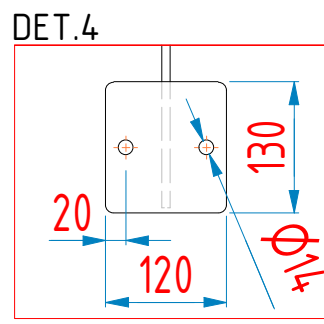
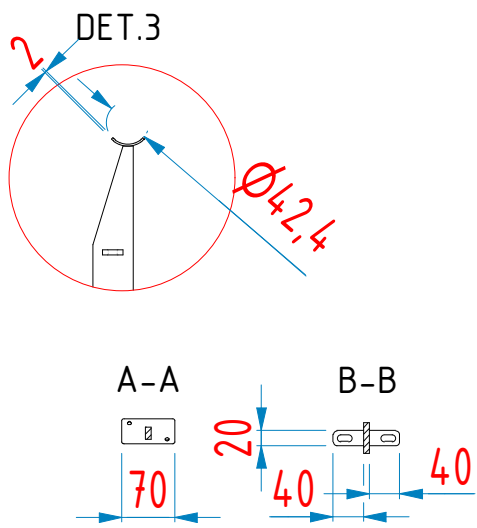
Fixing Elements	Standard	Quantity	Quality
Rivets 4,8x10mm	DIN 7337		A4
M8 x 25 Hexagonal bolt	DIN 933		HDG
M8 Hexagon nuts	DIN 934 / ISO 4033		HDG
Washer for M8	DIN 125 / ISO 7091		HDG

Antal Quantity		Vi ansvarar ej för trappans stabilitet vid infästningspunkter mot omkringliggande konstruktion.	
Titel Title	Ytbehandling surface treatment	Gen. Tolerans General tolerances EN ISO13920:1996 cl.B	Skala Scale 1:20
Massa Mass	Ref.dwg		
Konstr. Guld	110122-TH	Ritnr DwgNo	Durken Railing. Side mounted.idw

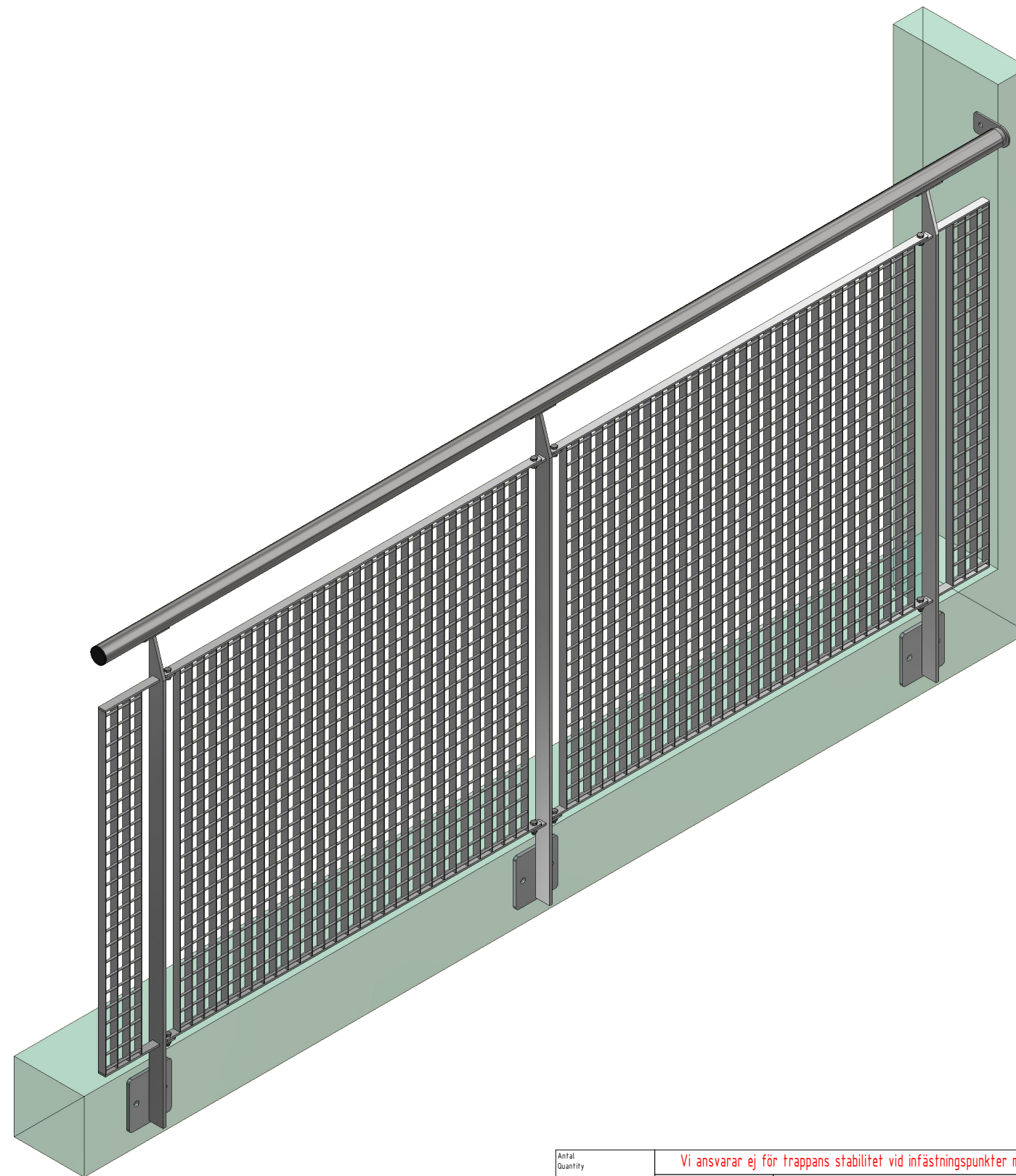
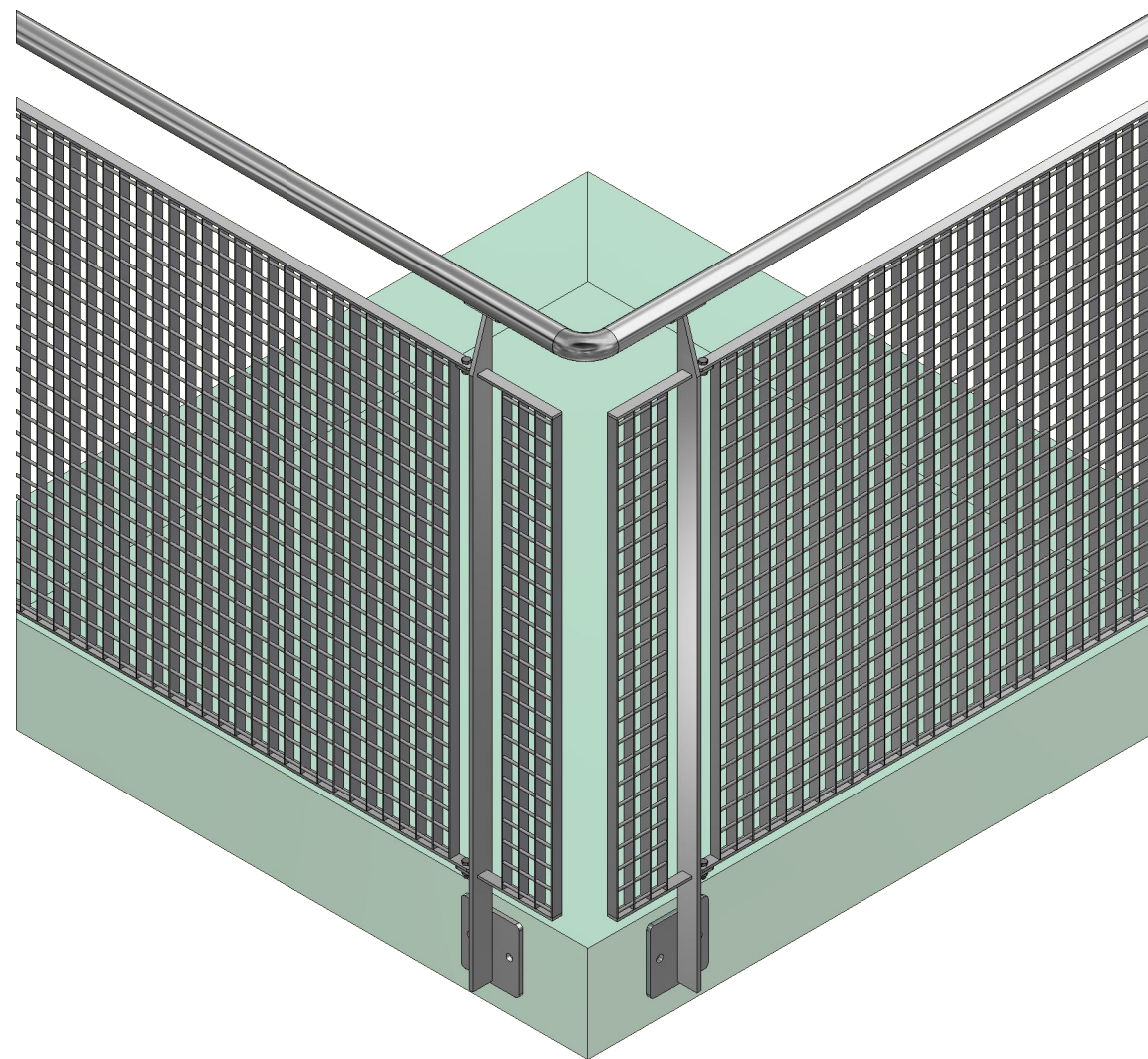
Comments  
1. All indeterminate welds: T-welds as fillet welds a = 3  
2. Connection of elements do as butt welds with full penetration  
3. With hot-dip galvanized components, welds should be closed.

General tolerances regarding the construction welded according to NS/SS-EN ISO 13920 class B	Material					
	Above 30 to 120	Above 120 to 400	Above 400 to 1000	Above 1000 to 2000	Above 2000 to 4000	Above 4000
	±1	±2	±3	±4	±6	±8

Steel S235JR  
NS/SS-EN 10025-2



# Assembly of Durken Railing. Side mounted.idw




Comments  
 1. All indeterminate welds: T-welds as fillet welds a = 3  
 2. Connection of elements do as butt welds with full penetration  
 3. With hot-dip galvanized components, welds should be closed.

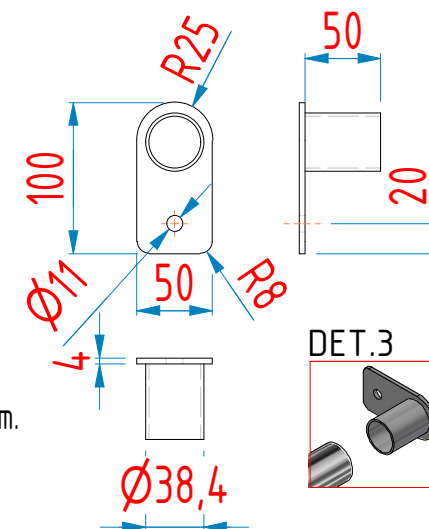
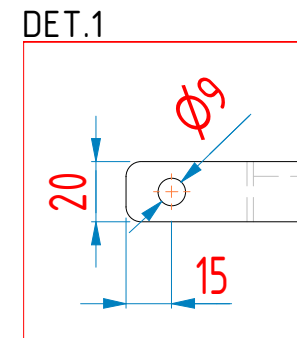
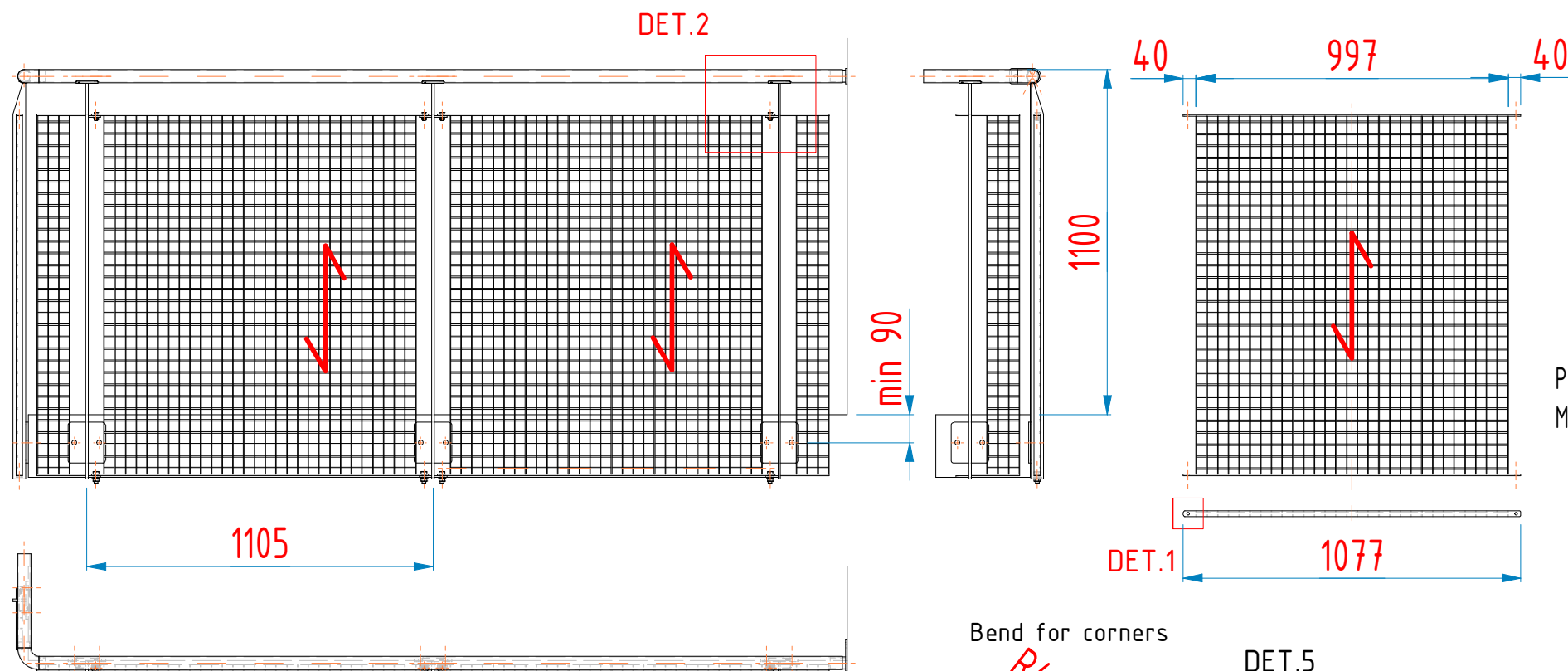
PN-EN 1090  
 EXC2, CE

General tolerances regarding the construction welded according to NS/SS-EN ISO 13920 class B					
Above 30 to 120	Above 120 to 400	Above 400 to 1000	Above 1000 to 2000	Above 2000 to 4000	Above 4000
±1	±2	±3	±4	±6	±8

Material  
 Steel S235JR  
 NS/SS-EN 10025-2

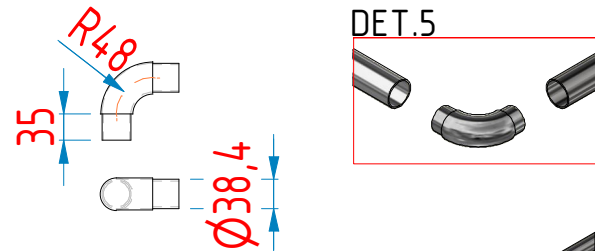
Antal Quantity		Vi ansvarar ej för trappans stabilitet vid infästningspunkter mot omkringliggande konstruktion.	
Titel Title		Ytbehandling surface treatment	
Massa Mass		Gen. Tolerans General tolerances EN ISO13920:1996 cl.B	
Konstr. Gdls.		Skala Scale 1:20	
110122-TM		 Muster Skuggas Väg 7 64171 ARVIKA SWEDEN Tel: 0571-181077 www.abcsolutions.se	
Ritn.nr DwgNo		Durken Railing. Side mounted.idw	
		Rev.	

# Durken Railing. Side mounted. Covers edge.idw



Press-welded grating mesh size 34.3x38.1/20x2mm.  
Mesh must be centered in the frame.

Bend for corners

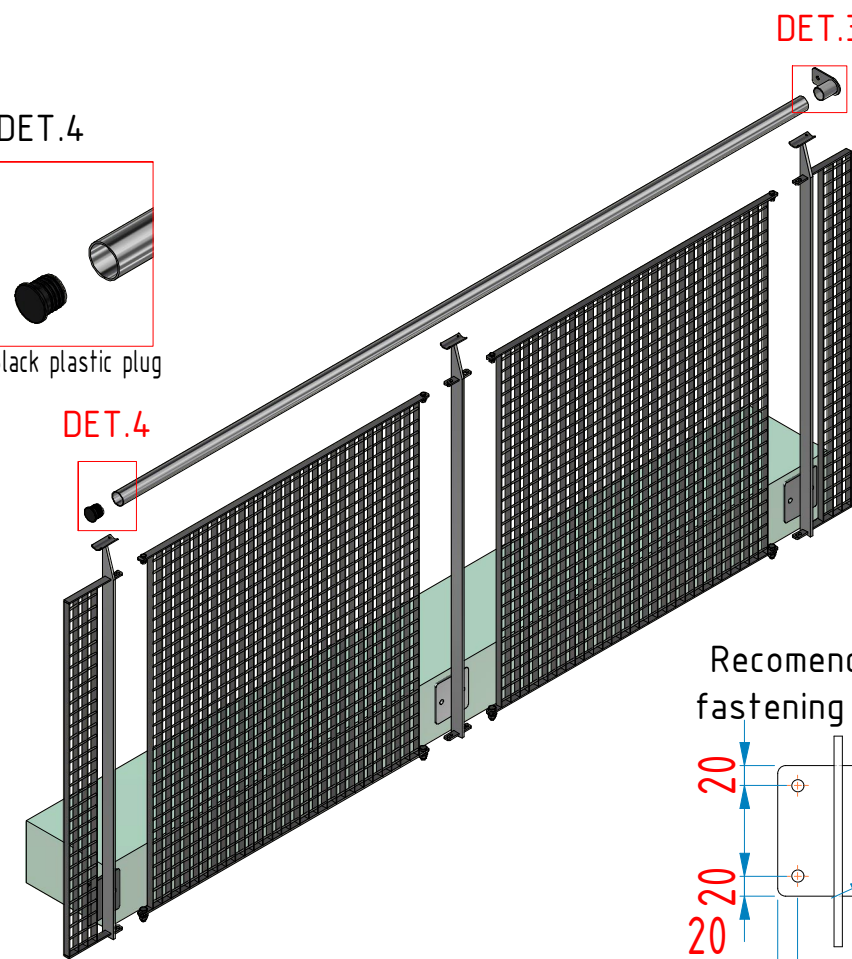


DET.4

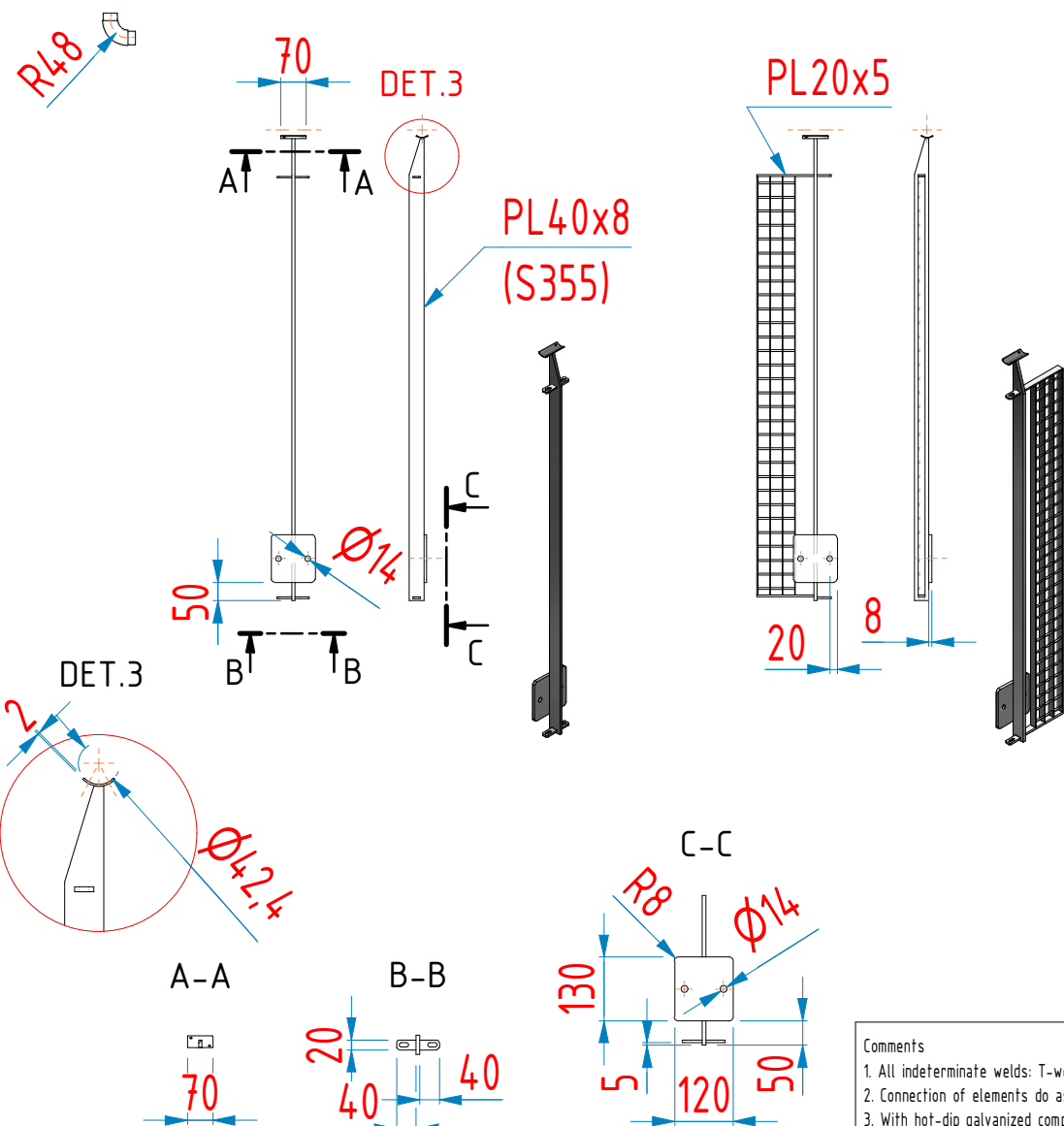
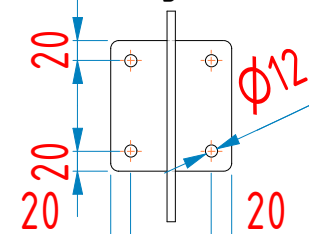


Black plastic plug

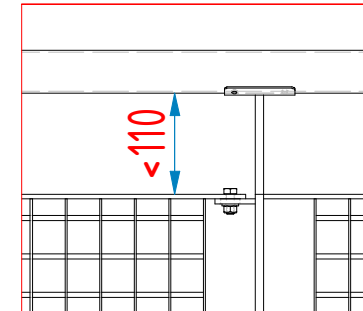
DET.4



Recommended for fastening in wood



DET.2



Comments  
1. All indeterminate welds: T-welds as fillet welds  $a = 3$   
2. Connection of elements do as butt welds with full penetration  
3. With hot-dip galvanized components, welds should be closed.

General tolerances regarding the construction welded according to NS/SS-EN ISO 13920 class B	Material					
	Above 30 to 120	Above 120 to 400	Above 400 to 1000	Above 1000 to 2000	Above 2000 to 4000	Above 4000
	±1	±2	±3	±4	±6	±8

Steel S235JR  
NS/SS-EN 10025-2

Fixing Elements	Standard	Quantity	Quality
Rivets 4,8x10mm	DIN 7337		A4
M8 x 25 Hexagonal bolt	DIN 933		HDG
M8 Hexagon nuts	DIN 934 / ISO 4033		HDG
Washer for M8	DIN 125 / ISO 7091		HDG

Antal Quantity

Titel Title

Ytbehandling surface treatment

Skala Scale 1:20

Gen. Tolerans General tolerances EN ISO13920:1996 cl.B

Ref.dwg's

Material

Steel S235JR  
NS/SS-EN 10025-2

110122-TH

Vi ansvarar ej för trappans stabilitet vid infästningspunkter mot omkringliggande konstruktion.

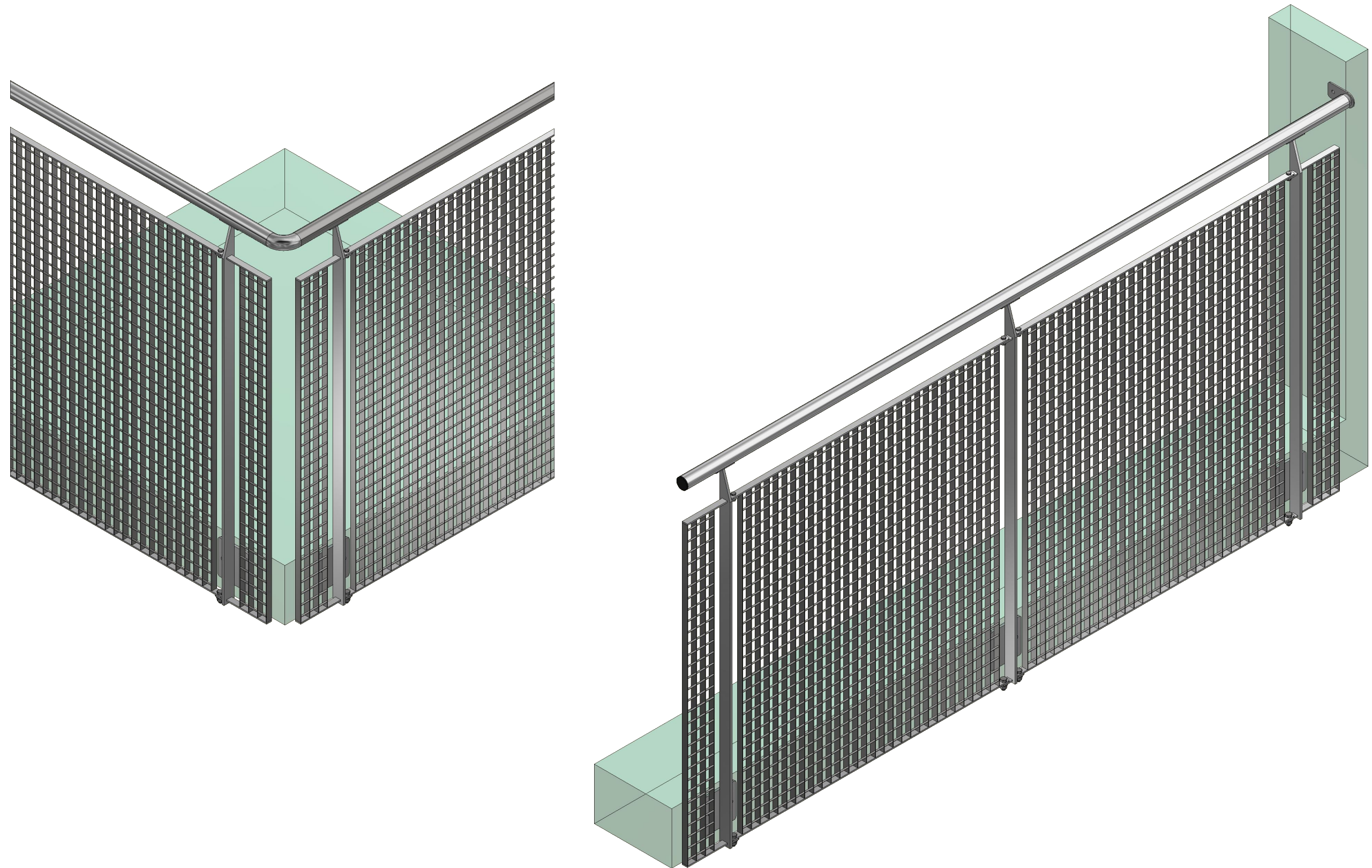
**abc** SOLUTIONS

Master Skuggas Väg 7  
64171 ARVIKA SWEDEN  
Tel: 0571-181077  
www.abcsolutions.se

Ritnr DwgNo Durken Railing. Side mounted. Covers edge.idw

Rev


# Assembly of Durken Railing. Side mounted. Covers edge.idw



Comments  
 1. All indeterminate welds: T-welds as fillet welds a = 3  
 2. Connection of elements do as butt welds with full penetration  
 3. With hot-dip galvanized components, welds should be closed.

General tolerances regarding the construction welded according to NS/SS-EN ISO 13920 class B					
Above 30 to 120	Above 120 to 400	Above 400 to 1000	Above 1000 to 2000	Above 2000 to 4000	Above 4000
±1	±2	±3	±4	±6	±8

Material  
 Steel S235JR  
 NS/SS-EN 10025-2

Antal Quantity	Vi ansvarar ej för trappans stabilitet vid infästningspunkter mot omkringliggande konstruktion.								
Titel Title	Ytbehandling surface treatment		<table border="1"> <tr> <td>Gen. Tolerans General tolerances</td> <td>Skala Scale</td> <td>A3</td> </tr> <tr> <td>EN ISO13920:1996 cl.B</td> <td>1:20</td> <td></td> </tr> </table>	Gen. Tolerans General tolerances	Skala Scale	A3	EN ISO13920:1996 cl.B	1:20	
Gen. Tolerans General tolerances	Skala Scale	A3							
EN ISO13920:1996 cl.B	1:20								
Massa Mass	Ref.dwg								
Konstr. Gdsk.	110122-TM	Ritn.nr DwgNo	Durken Railing. Side mounted. Covers edge.idw Rev.						


 Muster Skuggas Väg 7  
 64171 ARVIKA SWEDEN  
 Tel: 0571-181077  
 www.abcsolutions.se